

Dokumentacioni teknik per instalim dhe konfigurimit

- **MySQL Serverit**

(me bazen e te dhenave hms)

dhe

- **Softuerit**

(Hotel Management System)

V.1.0

Permbajtja e dokumentacioni teknik per instalim

Mjetete e nevojshme per pune	6
Instalimi I MySQL.....	9
Hapi 2 – Konfigurimi gjate instalimit.....	10
Hapi 3 – Pergaditja per instalimin e MySQL.....	11
Hapi 4 – Perfundimi instalimit dhe fillimi i konfigurimit te MySQL Server-it.....	12
Hapi 7 - Percaktimi gjate konfigurimit.....	15
Hapi 8 – Percaktimi per menyren e perdorimit te server-it	16
Hapi 9 – Percaktimi diskut se ku do te ruhen te dhenat e server-it.....	17
Hapi 10 – Percaktimi i numrit te concurrent connections.....	18
Hapi 11 – Lejimi portit per komunikim dhe konfigurimi firewall-it.....	19
Hapi 12 – Seti karaktereve qe do te perdoret per bazen e te dhenave	20
Hapi 13 – Menyra e punes se Serverit ne Sistemin Operative Windows	21
Hapi 14 – Vendosja e shifres per user-in root si dhe lejimi i manaxhimit dhe qasjes ne server nga larg	22
Hapi 16 – Finalizimi i instalimit ,konfigurimit dhe aktivizimit te server-it.....	23
Hapi 17 – Rezultati final i instalimit te MySQL Server-it.....	24
Hapi 18. Instalimi i mjeteve te Administratorit per MySQL	25
Hapi 19 – Pajtimi me licence	26
Hapi 20 – Skedari destinues se ku do te instalohen mjetet e Administratorit te Bazave te Dhenave	27
Hapi 21 – Cfare te instalohet nga mjetet e Administratorit.....	28
Hapi 22 – Fillimi me instalim.....	29
Hapi 23 – Progresi gjate instalimit	30
Hapi 24 – Perfundimi i instalimit te mjeteve te Administruesit te bazes se te dhenave ne MySQL 5.1	31

Hapi 25 - Krijimi i databazes # hms	32
Hapi 26 (qasja ne server te bazes te dhenave).....	33
Hapi 27 (krijimi i bazes permes schema create).....	34
Hapi 28 – krijimi i skemes se re me emrin hms	35
Hapi 29 – paraqitja e skemes hms ne Catalogs	36
Hapi 30 – Krijimi i databazes per pune	37
Hapi 31 – Hapja e skriptes.....	38
Hapi 32 – Skriptimi	39
Hapi 33 – Ekzekutimi i skriptes	40
Hapi 34 – Progresi gjate ekzekutimit te skriptes.....	41
Hapi 35 – Rezultati final	42
Hapi 36 – Instalimi i Aplikacionit.....	43
Hapi 37 – Pajtimi me licence e aplikacionit	44
Hapi 38 – Informata me rendesi gjate instalimit.....	45
Hapi 39 – Modi instalimit.....	46
Hapi 40 – Pathi instalimit	47
Hapi 41 – Instalimi.....	49
Dhe perfundimi.....	50
Hapi 42 – Programi i instaluar – startimi.....	51
Hapi 43 – Startimi me program	52
Hapi 44 – Qasja (pas konfigurimit final)	53
Hapi 45- Hapja e programit per pune (programi gati per pune).....	54
Hapi 46 – Backup “krijimi I kopjes reserve te baze se te dhenave”	55
Katalogjet ne SERVER	56
Backup-i i te dhenave	57

Manul teknik per konfigurim dhe instalim te bazes se te dhenave dhe aplikacionit

Parameterizimi para krijimit te backup-it.....	58
Ekzekutimi per krijimin e backup-it.....	59
Percaktimi lokacionit per ruajtjen e te dhenave	60
Perfundimi i backup-it	61
Restore per te bere kthimin e te dhenave (ne rast te prishjes se serverit) deri per daten kur eshte bere backup-i	62
Zgjedhja e fajllit per restore.....	63
Berja Restore e te dhenave nga Backup-i.....	64
Fillimi i restore-s ne bazen e te dhenave	65
Perfundimi I restore-s me sukses.....	65

Manul teknik per konfigurim dhe instalim te bazes se te dhenave dhe aplikacionit

Faqe Blanko per shenimet shtese :

Mjetete e nevojshme per pune

Shkarkimi i MYSQL 5.x (e shkarkojm version ESSENTIAL) si dhe mjetet per pune siq eshte Admin Toolsat per MySQL

ne linqet si me poshte

<http://dev.mysql.com/downloads/mysql/5.1.html#windows32>

me saktesisht ne :

MySQL 5.1 Essential

<http://mirrors.24-7-solutions.net/pub/mysql/Downloads/MySQL-5.1/mysql-essential-5.1.30-win32.msi>

Admin Tools

<http://mirrors.24-7-solutions.net/pub/mysql/Downloads/MySQLGUITools/mysql-gui-tools-5.0-r15-win32.msi>

Aplikacioni per nevojat e saja perdore NETFRAMEWORK 2.0 SP2 edhe nese nuk eshte i instaluar duhet te shkarkohet nga sajti i Microsoft

<http://www.microsoft.com/en-us/download/details.aspx?id=1639>

apo ne menyre direkte

http://download.microsoft.com/download/c/6/e/c6e88215-0178-4c6c-b5f3-158ff77b1f38/NetFx20SP2_x86.exe (versioni 32bitsh)

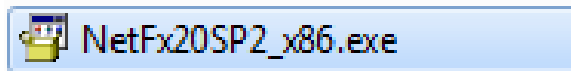
ose

http://download.microsoft.com/download/c/6/e/c6e88215-0178-4c6c-b5f3-158ff77b1f38/NetFx20SP2_x64.exe (versioni 64bitsh)

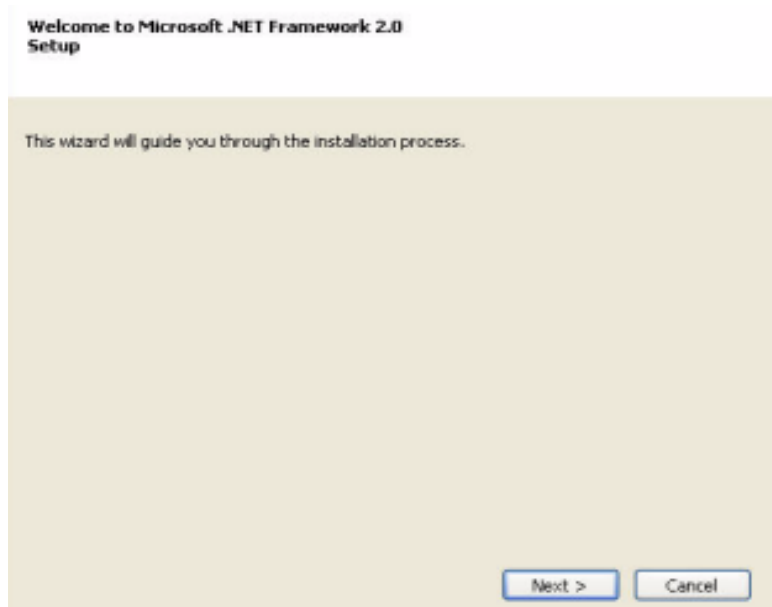
Manul teknik per konfigurim dhe instalim te bazes se te dhenave dhe aplikacionit

Instalimi i NETFRAMEWORK 2.0

Klikojmi ne fajllin **NetFx20SP2_x86.exe**



Fillimi i instalimit te NetFramework 2.0SP2

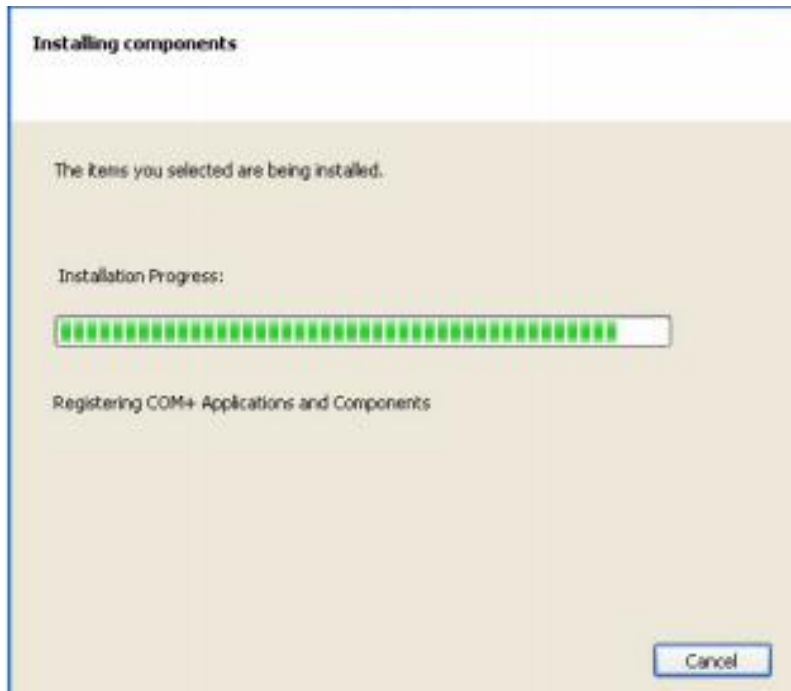


Klikojmi Next> per te vazhduar

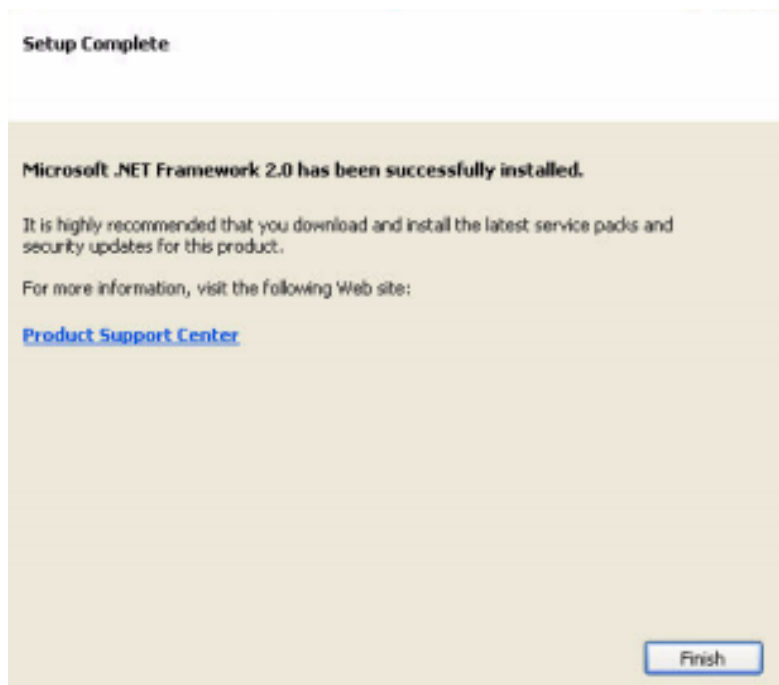


Pajtimi me licence - pastaj klikojmi ne butonin Install >

Progresi i instalimit te NetFramework 2.0



Perfundimi i instalimit te NetFramework 2.0 SP2

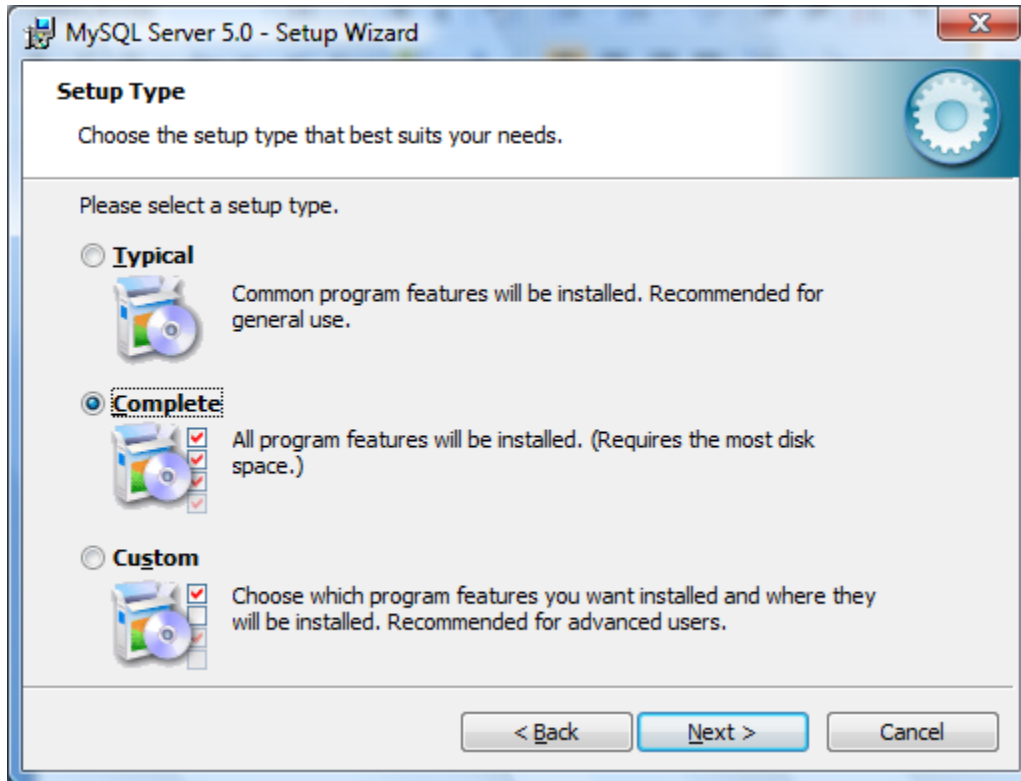


Instalimi I MySQL



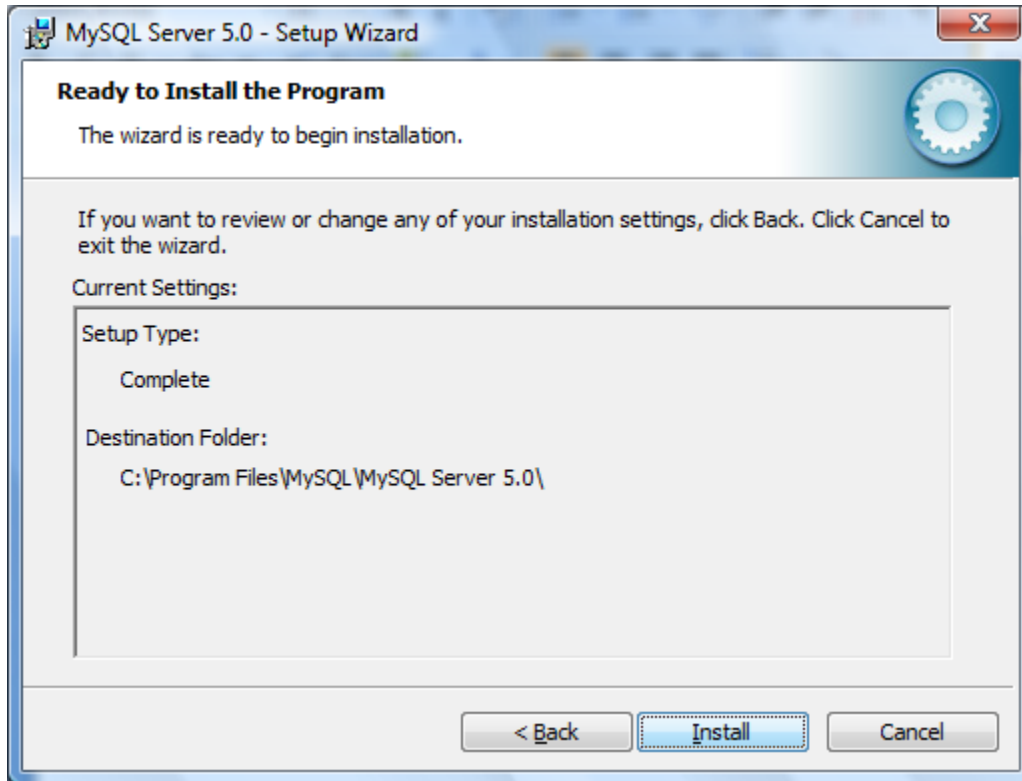
Kliko NEXT

Hapi 2 – Konfigurimi gjate instalimit



Zgjedhe Complete edhe kliko NEXT

Hapi 3 – Pergaditja per instalimin e MySQL



Kliko Install dhe e percjell deri te kryhet instalimi i tere

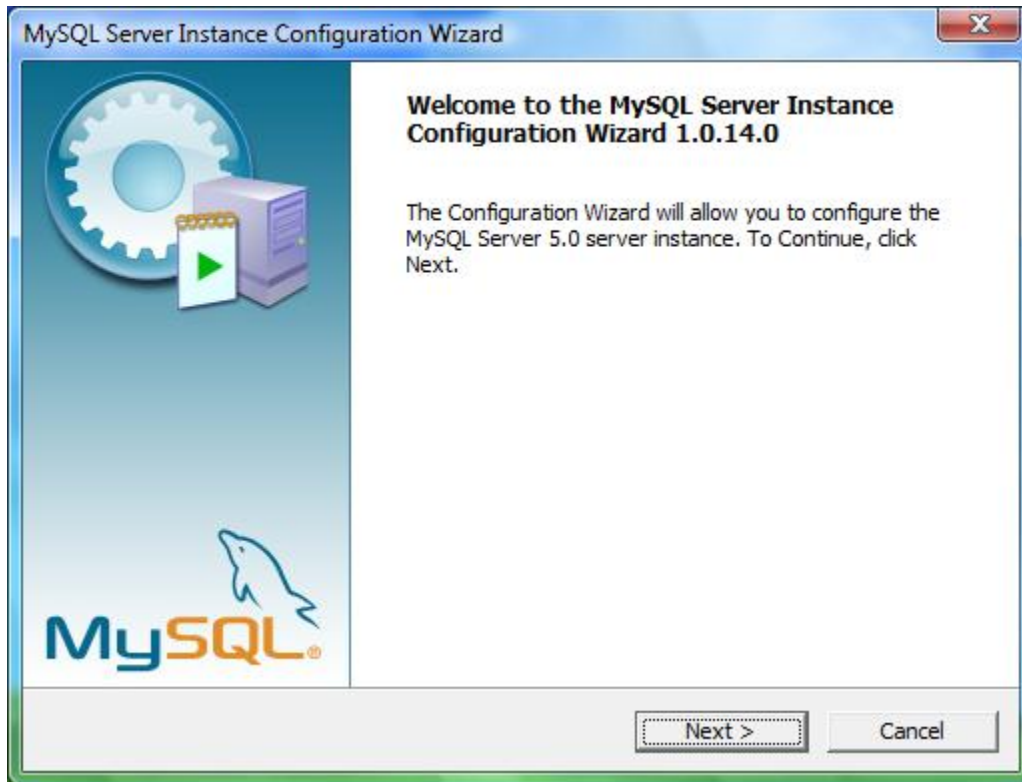
Hapi 4 – Perfundimi instalimit dhe fillimi i konfigurimit te MySQL Server-it



Kliko ne Finish per te filluar konfigurimin e serverit

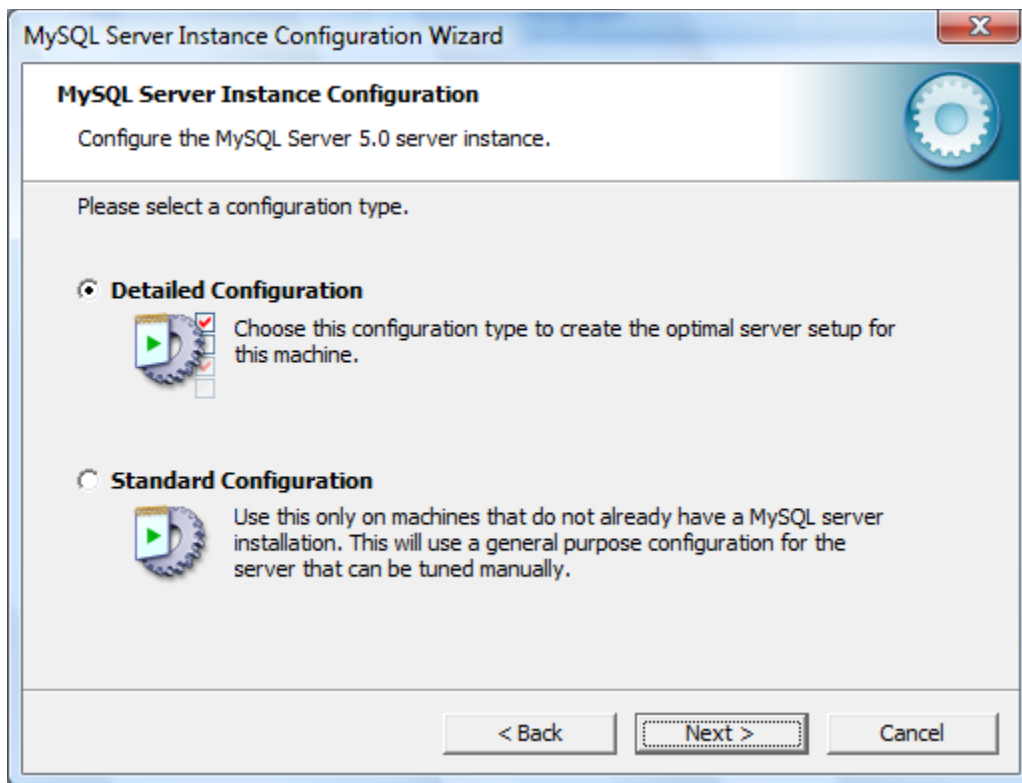
Hapi 5 (nese nuk starton ky magjistari pas FINISH) ju mund ta **startoni nga Menuja**

START -> Program Files -> MySQL -> **MySQL Server Instance Configuration Wizard**



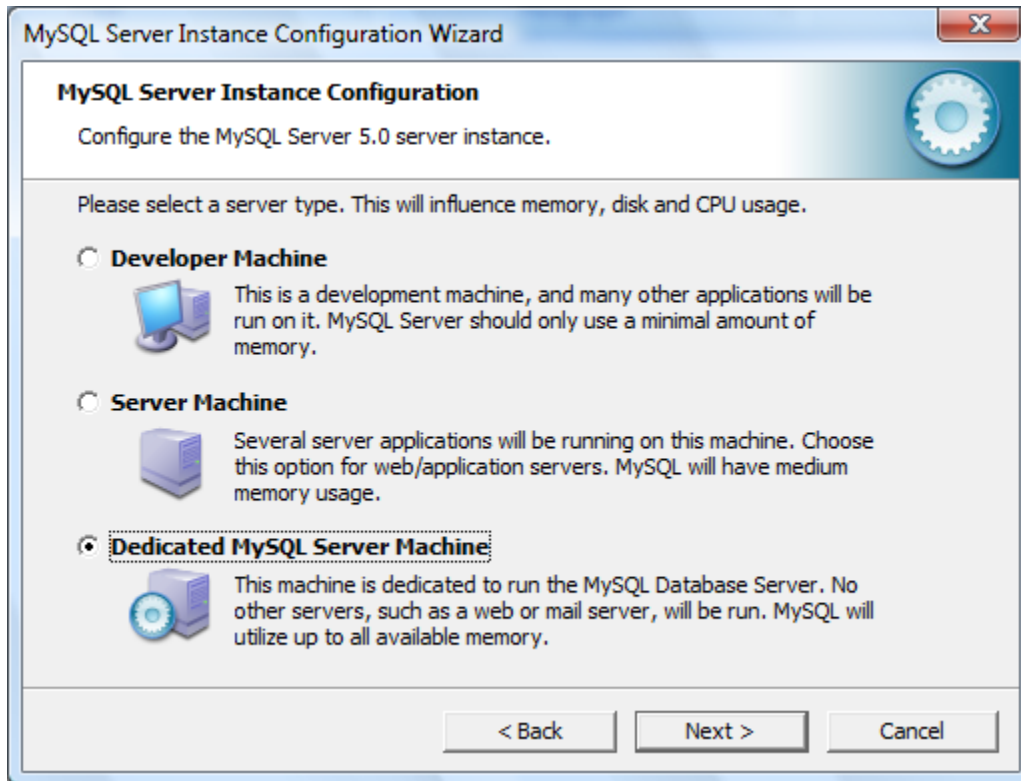
Pastaj vazhdojme klikojm ne NEXT

Hapi 6 – Konfigurimi detal



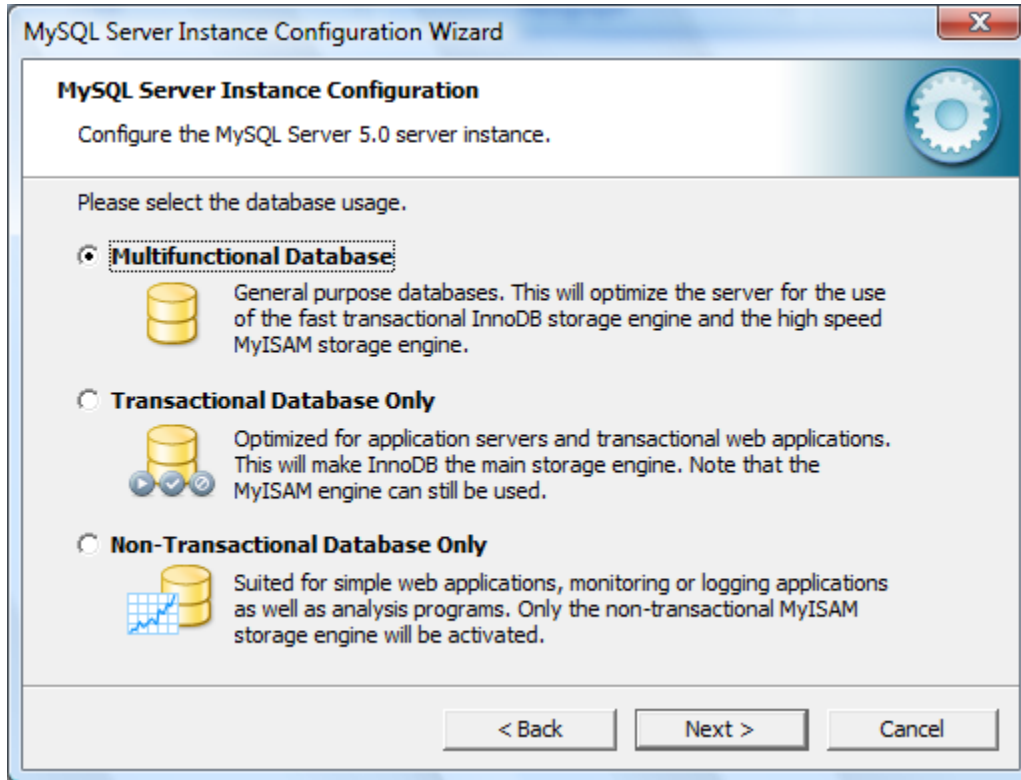
Klikojm NEXT

Hapi 7 - Percaktimi gjate konfigurimit



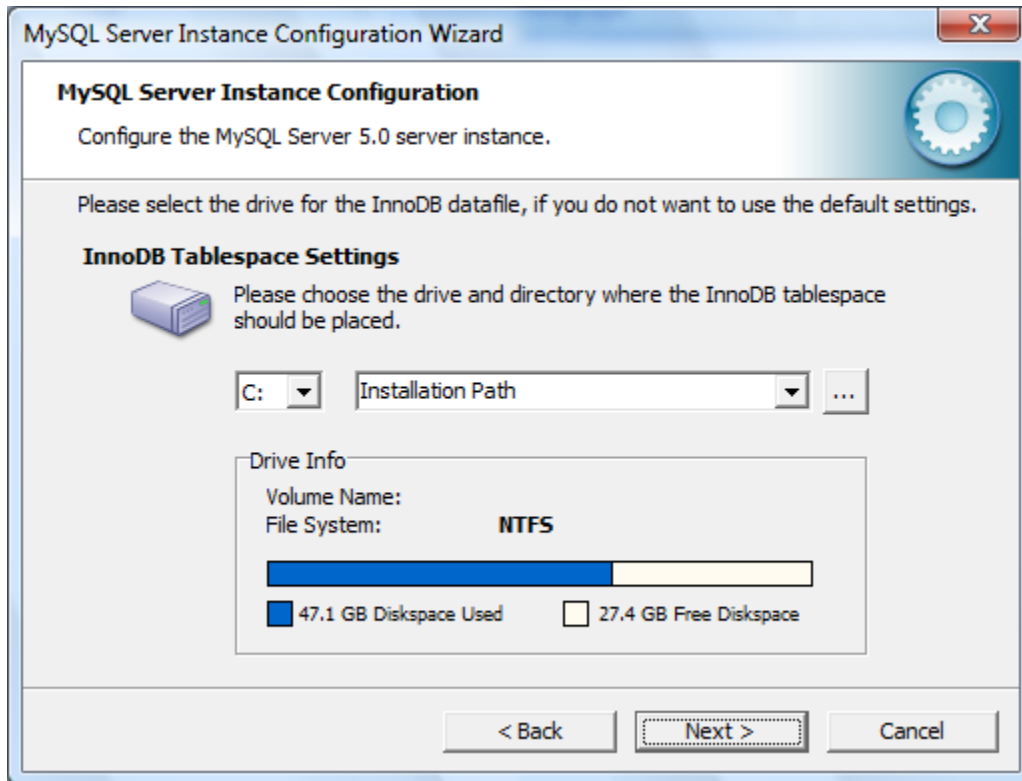
E zgjedhim Dedicated MySQL Server Machine dhe vazhdojm duke klikuar NEXT

Hapi 8 – Percaktimi per menyren e perdorimit te server-it



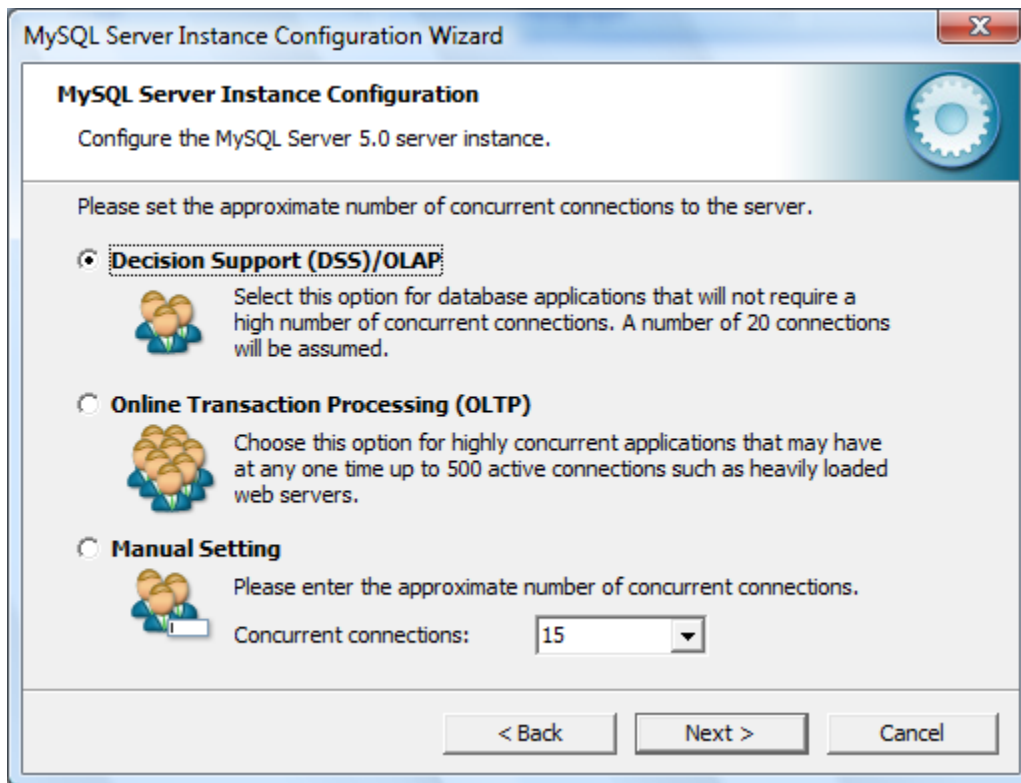
Klikojm NEXT per te vazhduar

Hapi 9 – Percaktimi diskut se ku do te ruhen te dhenat e server-it



Klikojm NEXT per vazhduar (ose mund te zgjedhim ndonje disk tjetër dhe te vazhdojm me tutje)

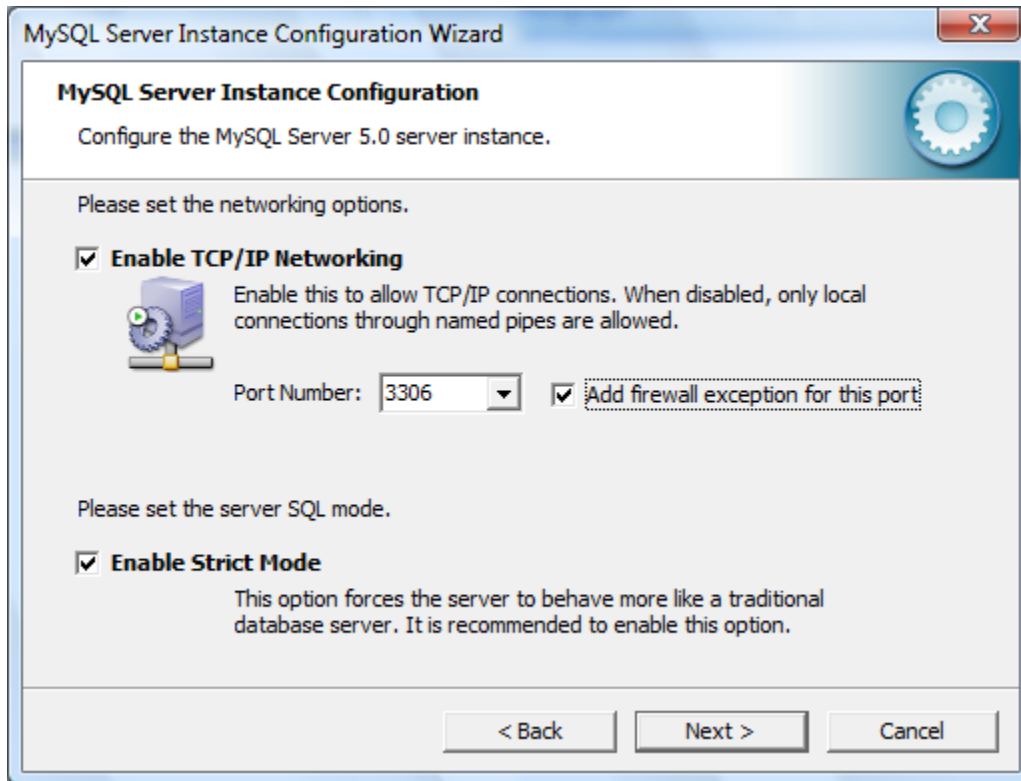
Hapi 10 – Percaktimi i numrit te concurrent connections



Ketu e zgjedhim se si te funksionoj Serveri si dhe sa lidhje deshiron te kete ne kete baze te dhenave duke e ndryshuar numrin e lidhjeve ne Concurrent Connections:

Per te vazhduar me tutje klikojm NEXT

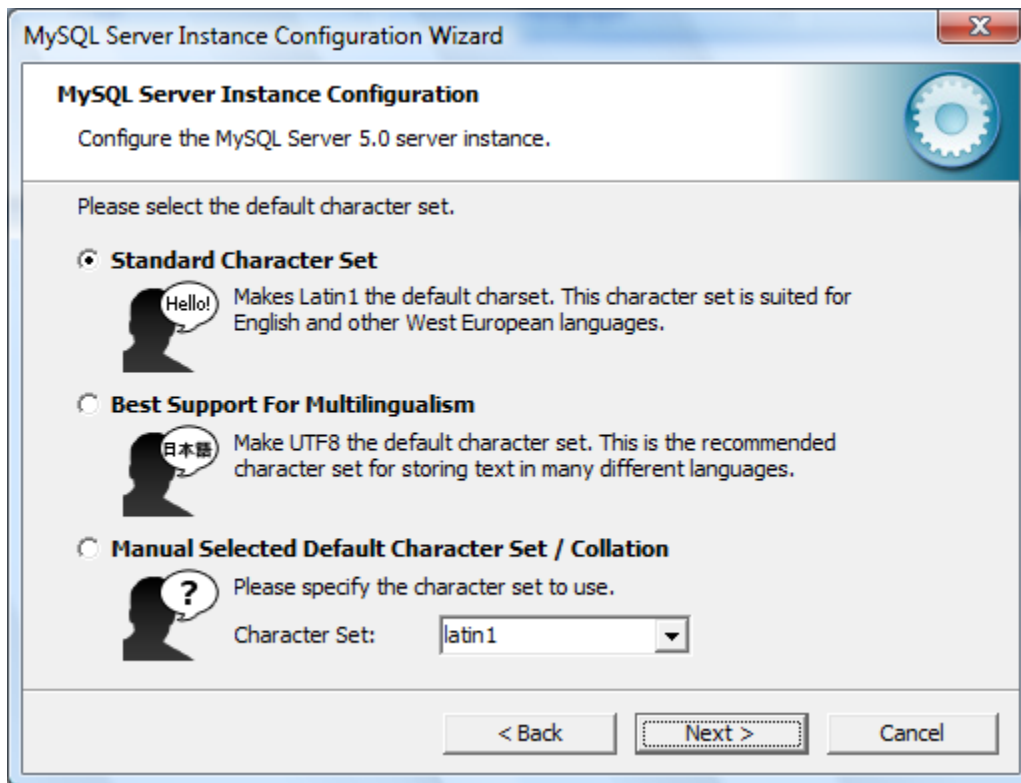
Hapi 11 – Lejimi portit per komunikim dhe konfigurimi firewall-it



I thojme te lejoj qasjen ne **TCP/IP** gjithashtu I thojme qe te lejoj hapjen e portit per komunikim **3306** (munde te jete dhe cfaredo tjetere port) ,gjithashtu selektojm **Enable Strict Mode**

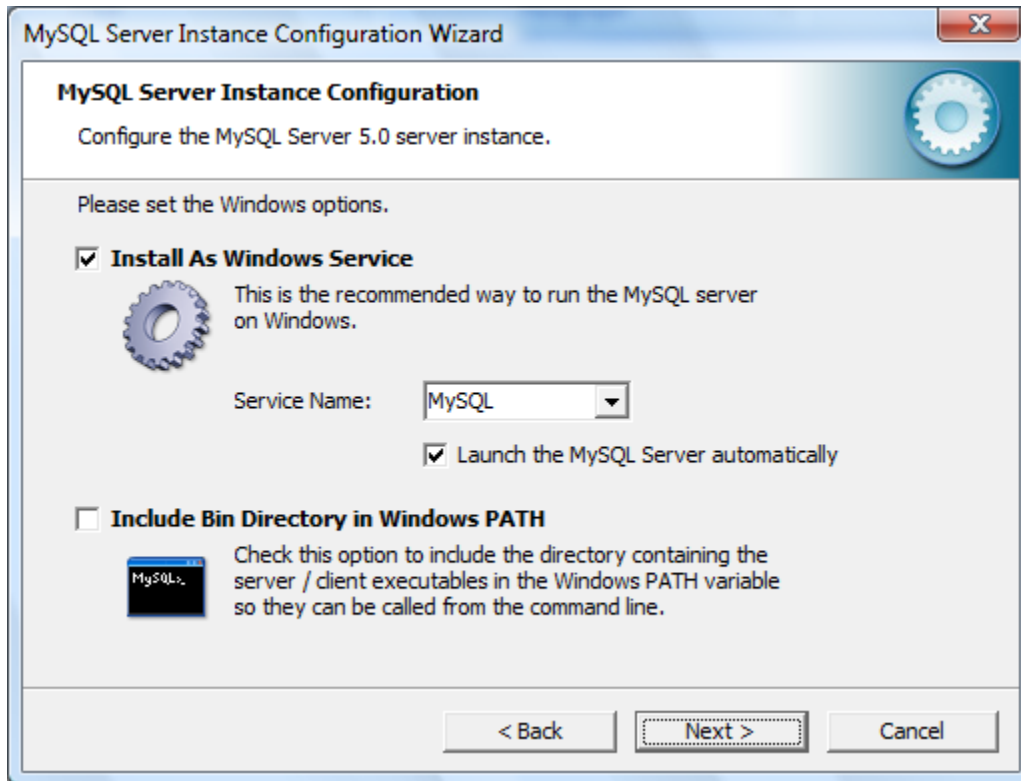
Dhe pastaj per vazhdim me tutje klikojm ne NEXT

Hapi 12 – Seti karaktereve qe do te perdoret per bazen e te dhenave



Nuk ndryshojmi asgje por vazhdojme duke klikuar ne NEXT

Hapi 13 – Menyra e punes se Serverit ne Sistemin Operative Windows



Asgjë nuk ndryshojm nga fotoja dhe per te vazhduar klikojm ne NEXT

Hapi 14 – Vendosja e shifres per user-in root si dhe lejimi i manaxhimit dhe qasjes ne server nga larg



Per perdoruesin **root**(eshte perdoruesi i fabrikuar nga MySQL) i thojme qe perdoret remotely duke e bere selektimin **Enable root access from remote machines** .

Pasi qe heren e pare instalohet ajo nuk ka shifer keshtu qe per

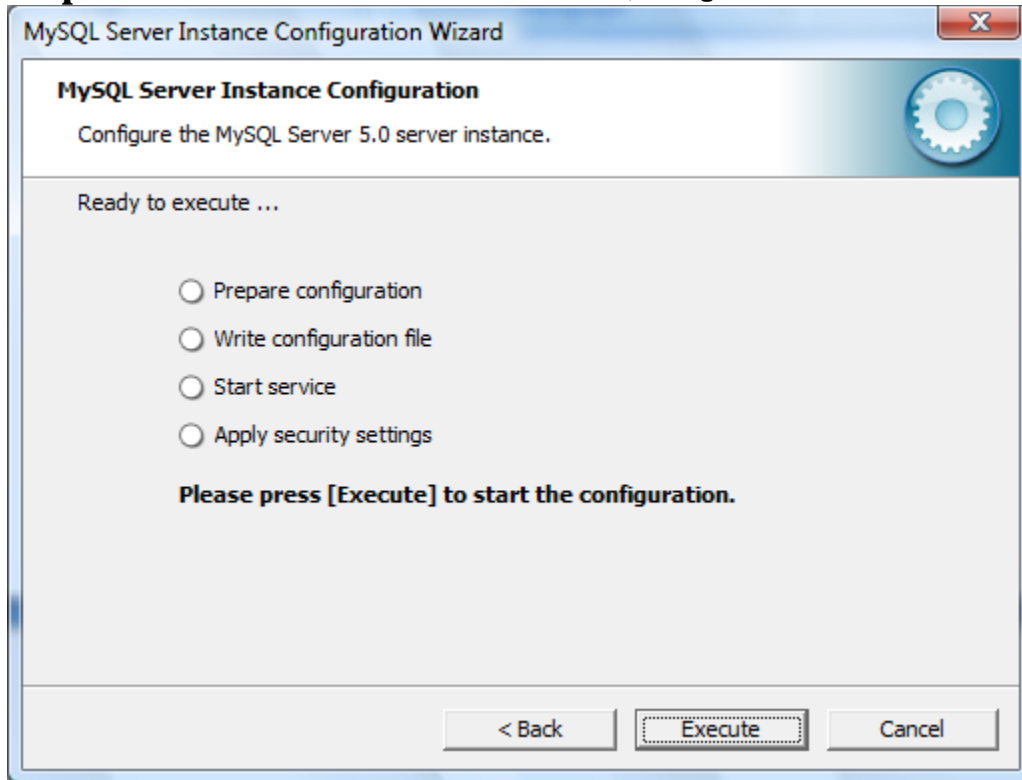
Current root password : (nuk shenojme asgje e lejm te zbrazet)

New root password : ja japim nje shifren **root**

Confirm : e perseritim shifren **root**

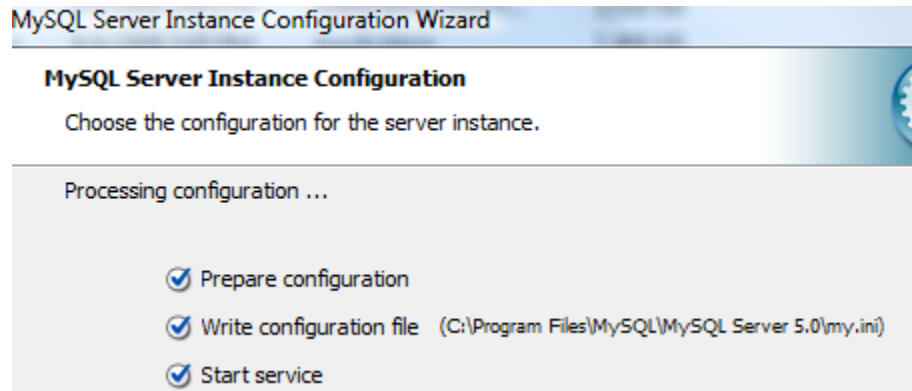
Dhe per te vazhduar klikojm ne NEXT

Hapi 16 – Finalizimi i instalimit ,konfigurimit dhe aktivizimit te server-it



Klikojm ne **Execute** qe magjistari te perfundoj konfigurimin e MySQL per pune me **Pos Pro v1.0**

Hapi 17 – Rezultati final i instalimit te MySQL Server-it



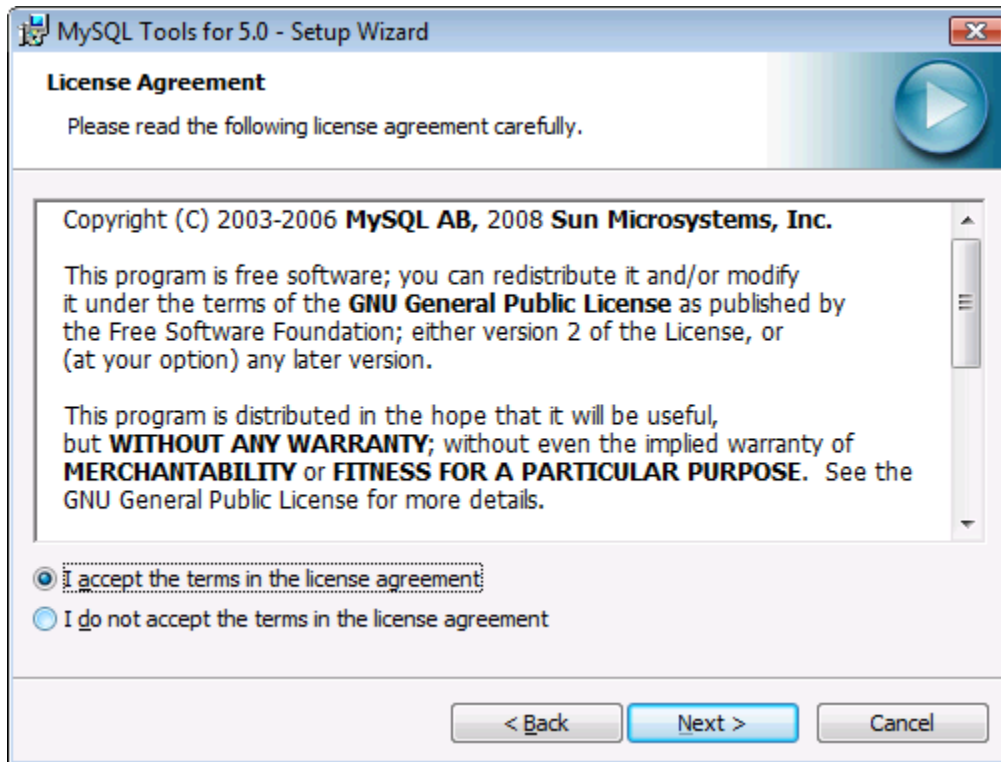
Dhe pasi qe te gjitha keto te jene aktivizuar e klikojm ne FINISH per te perfunduar

Hapi 18. Instalimi i mjeteve te Administratorit per MySQL



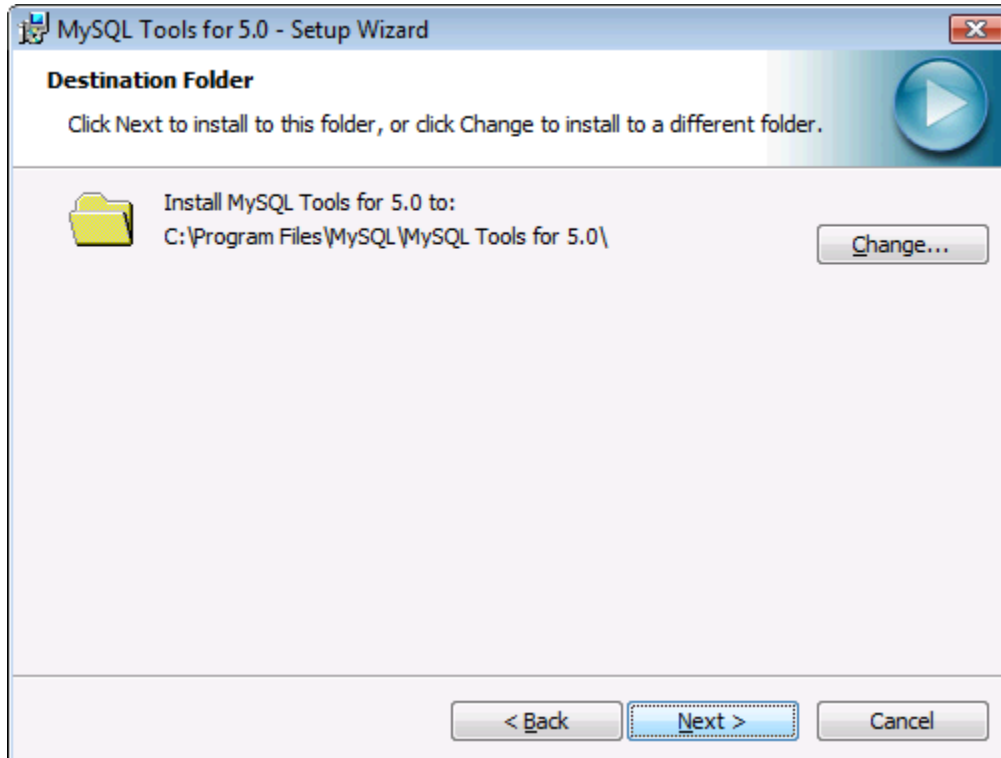
Per te vazhduar klikojm ne NEXT

Hapi 19 – Pajtimi me licence



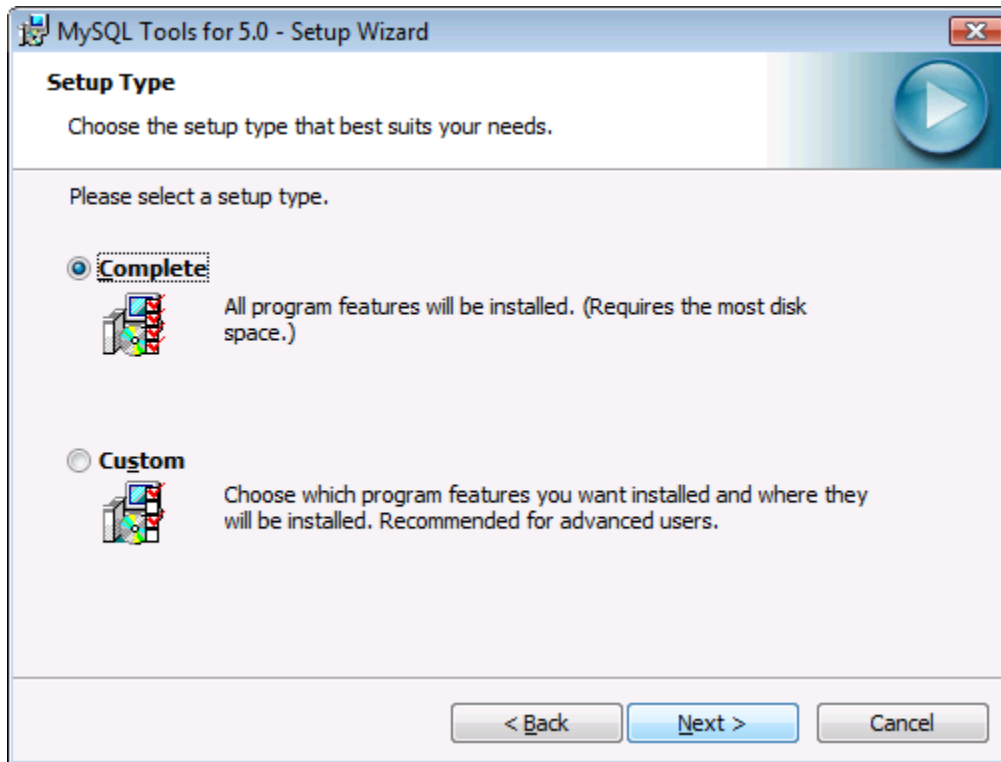
E zgjedhim **I accept the terms in the license agreement** dhe pastaj e klikojm butonin NEXT

Hapi 20 – Skedari destinues se ku do te instalohen mjetet e Administratorit te Bazave te Dhenave



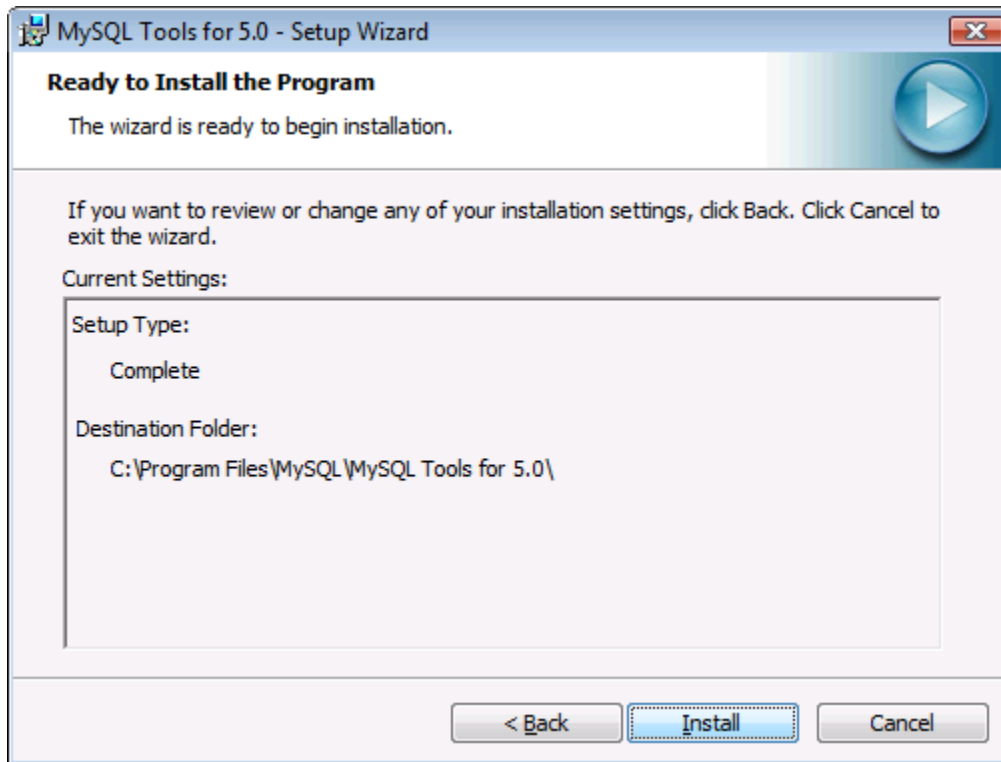
Vazhdojm ashtu qe klikojm butonin NEXT

Hapi 21 – Cfare te instalohet nga mjetet e Administratorit



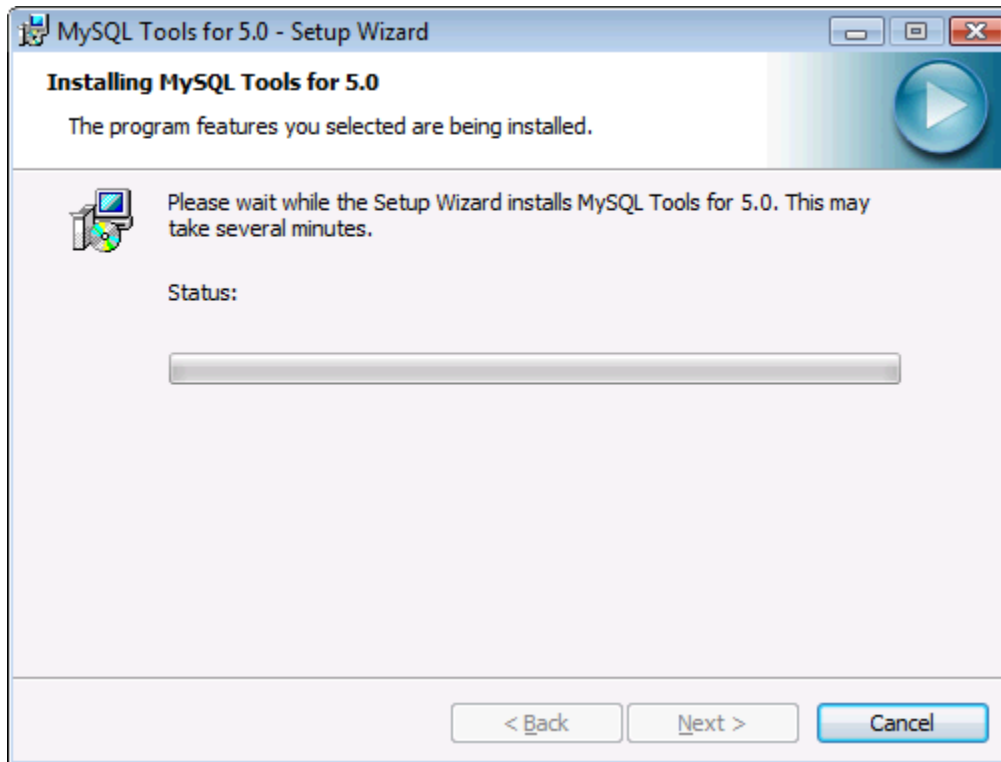
E zgjedhim **Complete** pastaj vazhdojm ashtu qe klikojm ne NEXT

Hapi 22 – Fillimi me instalim



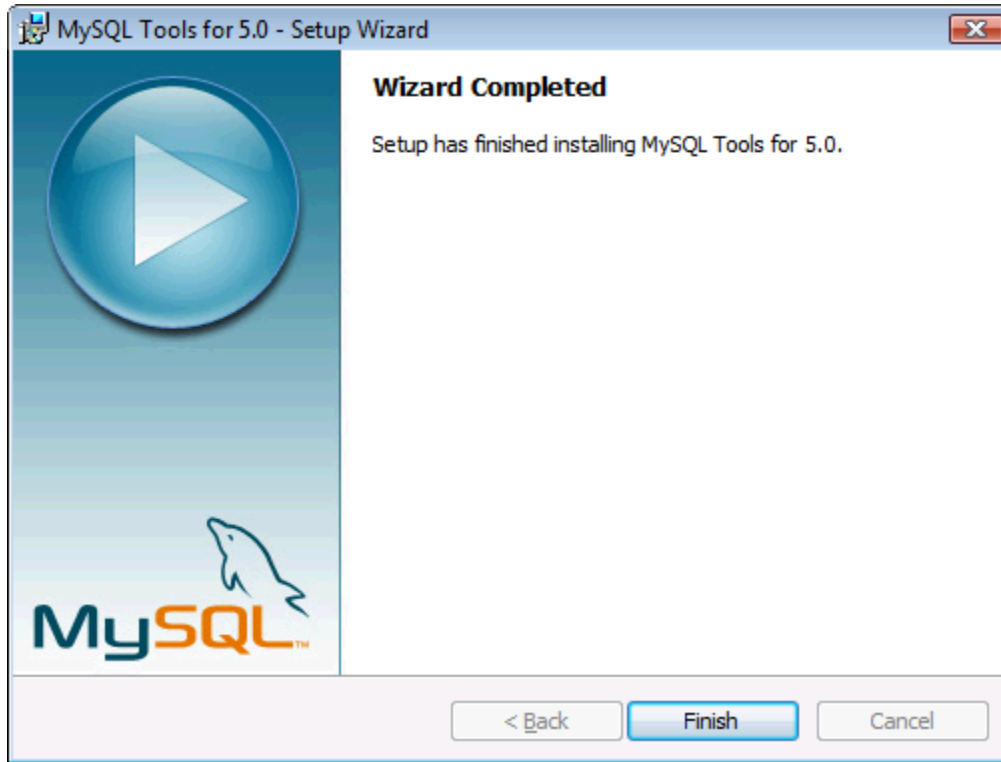
Vazhdojm duke e klikuar butonin **Install**

Hapi 23 – Progresi gjate instalimit



Presim deri te kryhet instalimi

Hapi 24 – Perfundimi i instalimit te mjeteve te Administruesit te baze se te dhenave ne MySQL 5.1



Per t'a perfunduar klikojm ne Finish

Hapi 25 - Krijimi i databazes # hms

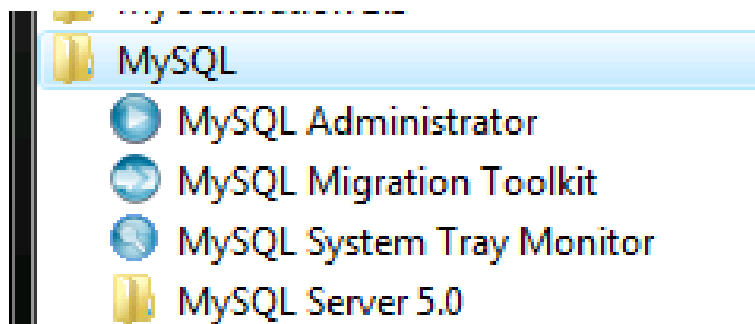
Startojm programin MySQL Administrator nga Menuja

Start ->

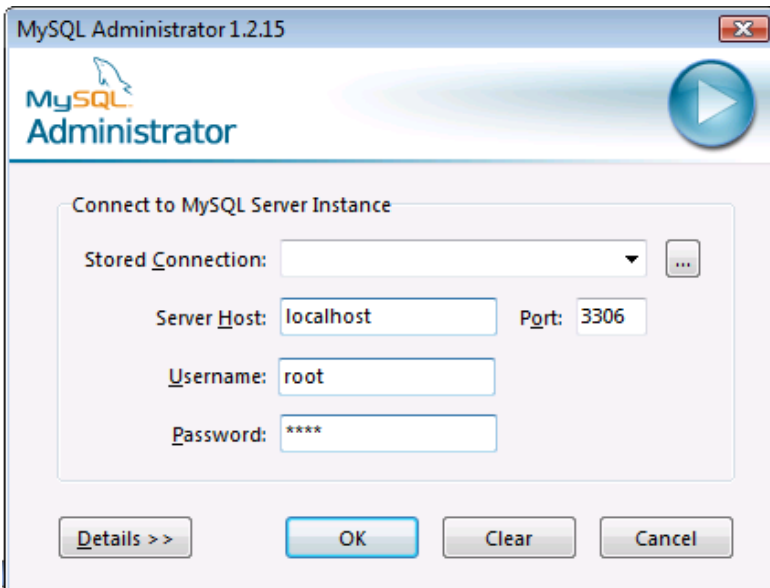
Program Files ->

MySQL ->

MySQL Administrator



Hapi 26 (qasja ne server te bazes te dhenave)



E krijojm server host : localhost

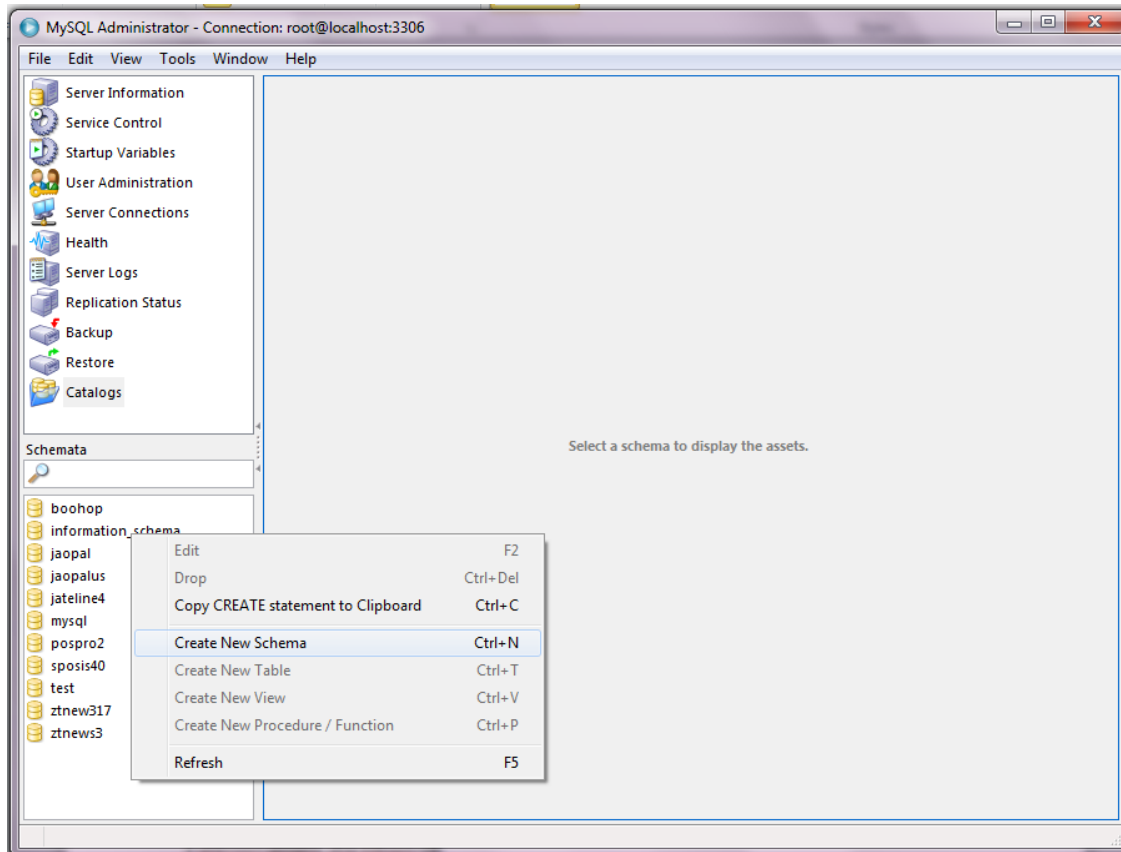
Pastaj ne Username : root

Dhe Password :root

Pas kesaj klikojm OK

Hapi 27 (krijimi i bazez permes schema create)

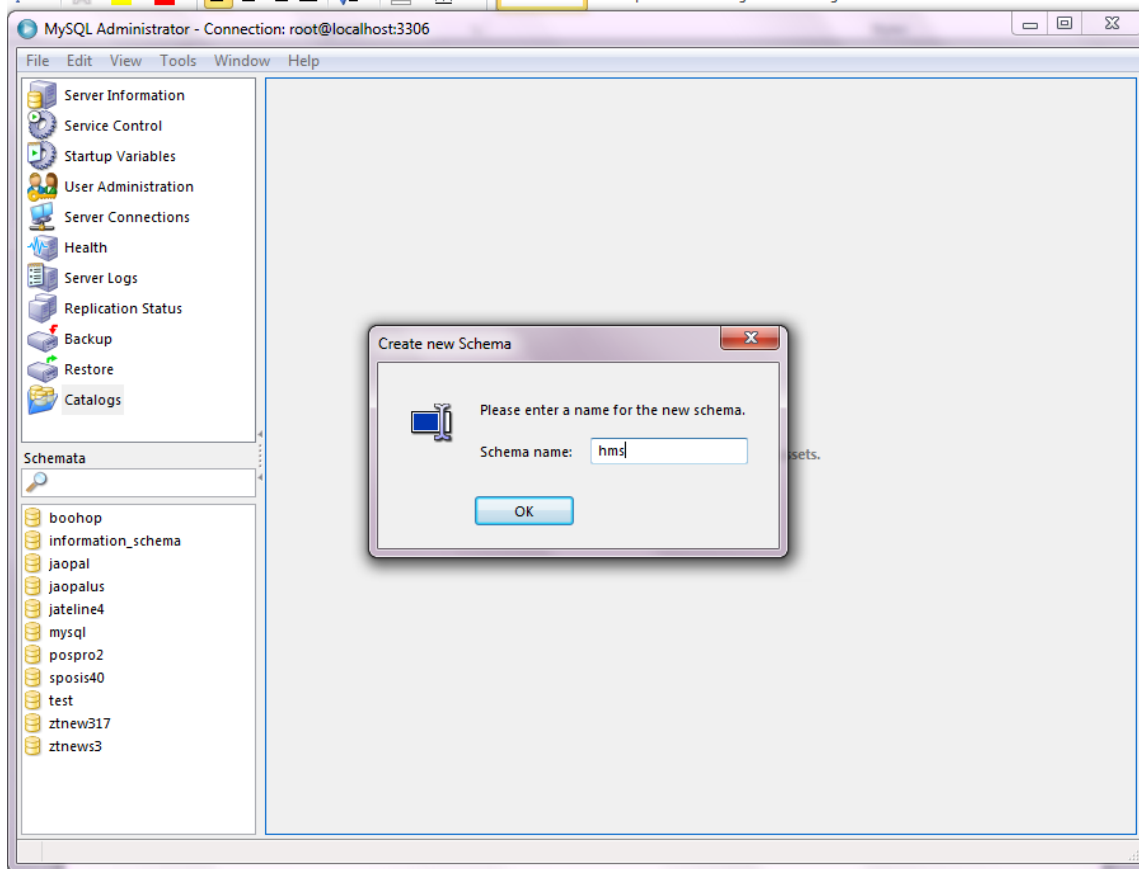
Pasi qe te hyjm ne server klikojm ne folderin **Catalogs**



Dhe pastaj klikojm me tastin e djathet mbi bazen **information_schema**

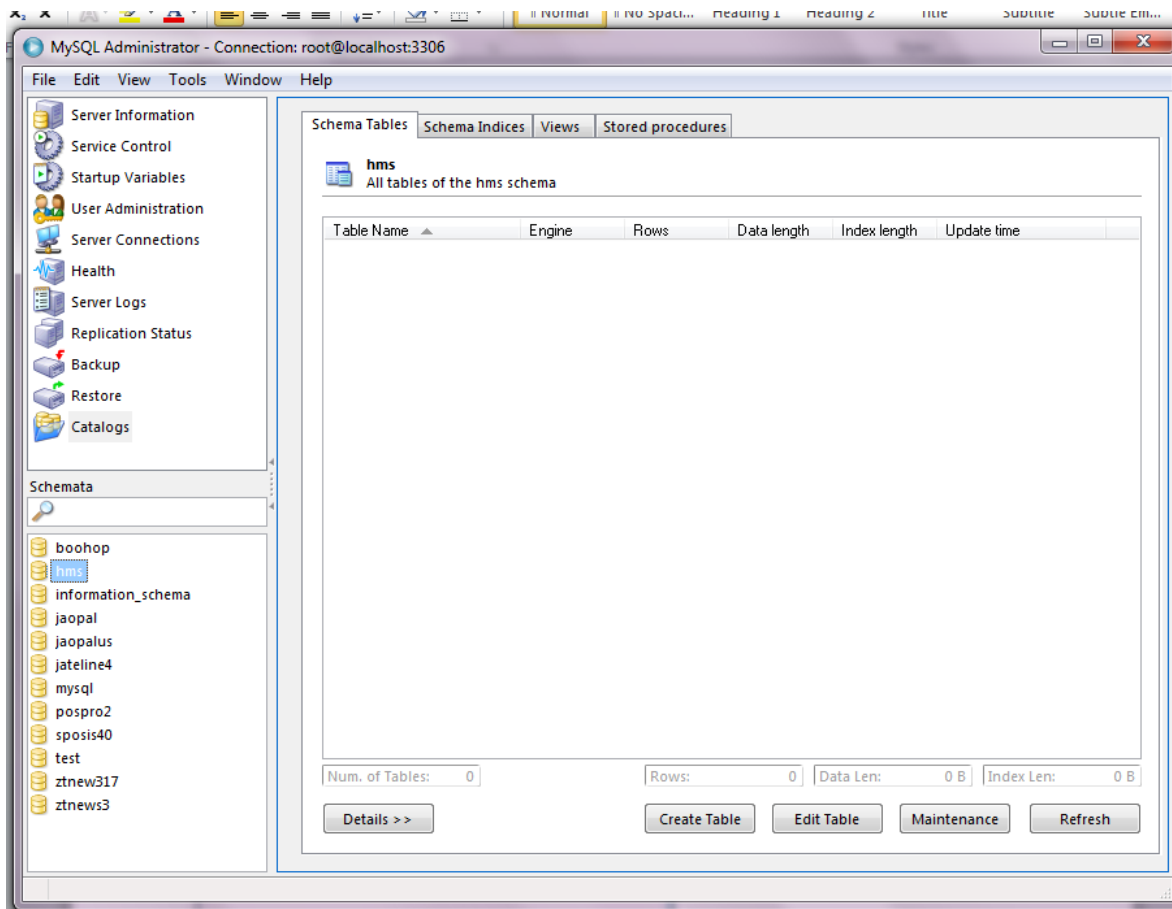
Dhe e bejme **Create New Schema** sikur ne foton e paraqitur me larte

Hapi 28 – krijimi i skemes se re me emrin hms

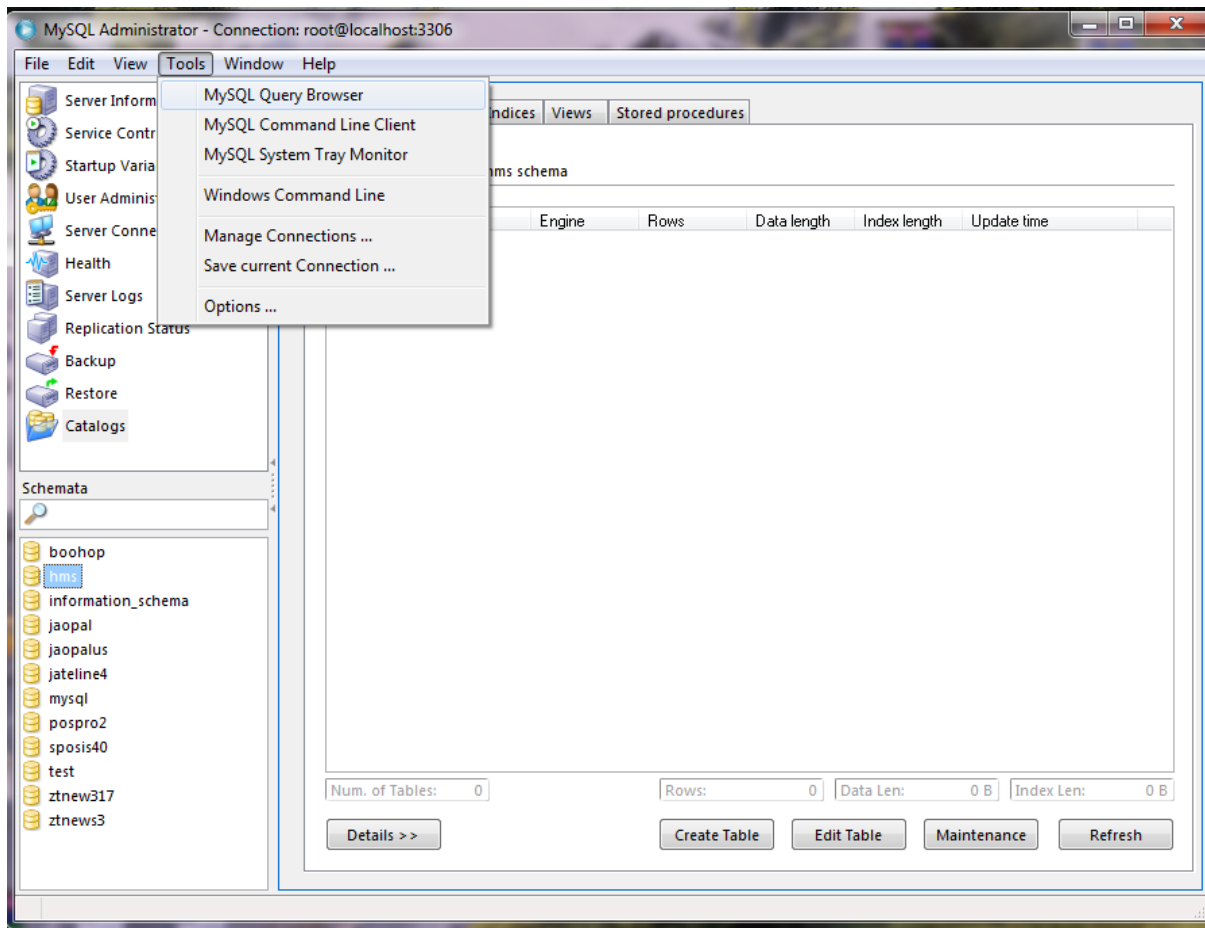


E shenojmi **hms** dhe klikojm **OK**

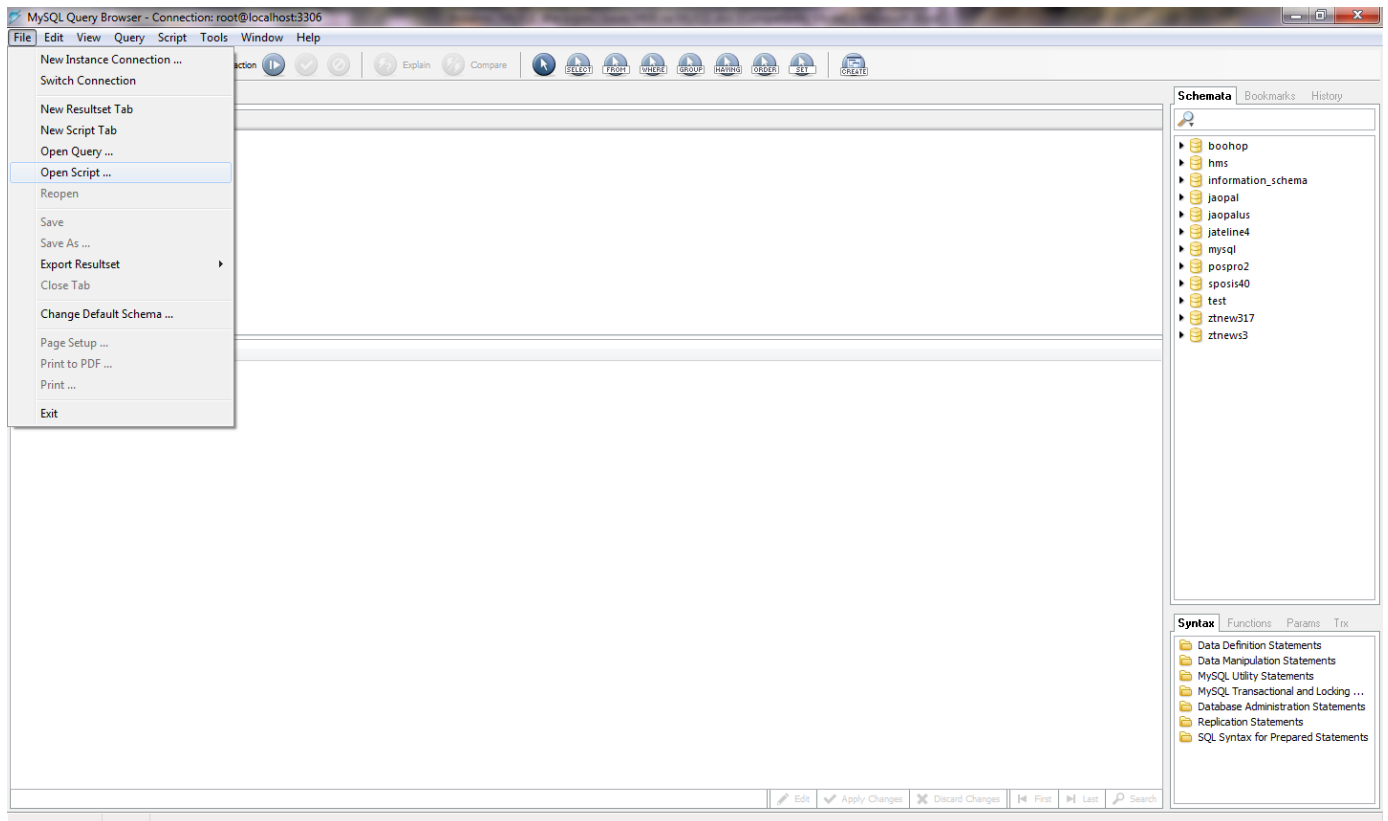
Hapi 29 – paraqitja e skemes hms ne Catalogs



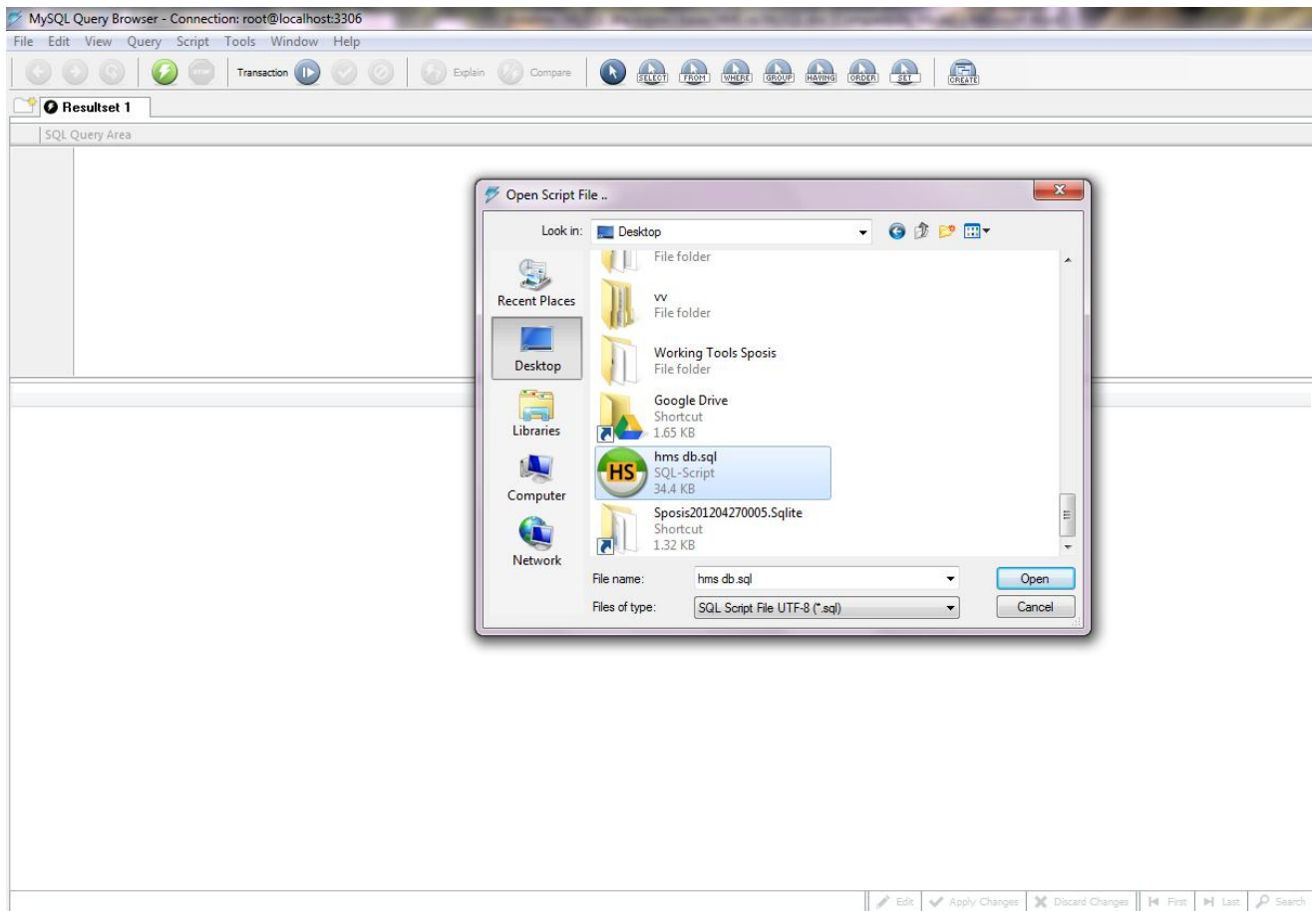
Hapi 30 – Krijimi i databazes per pune



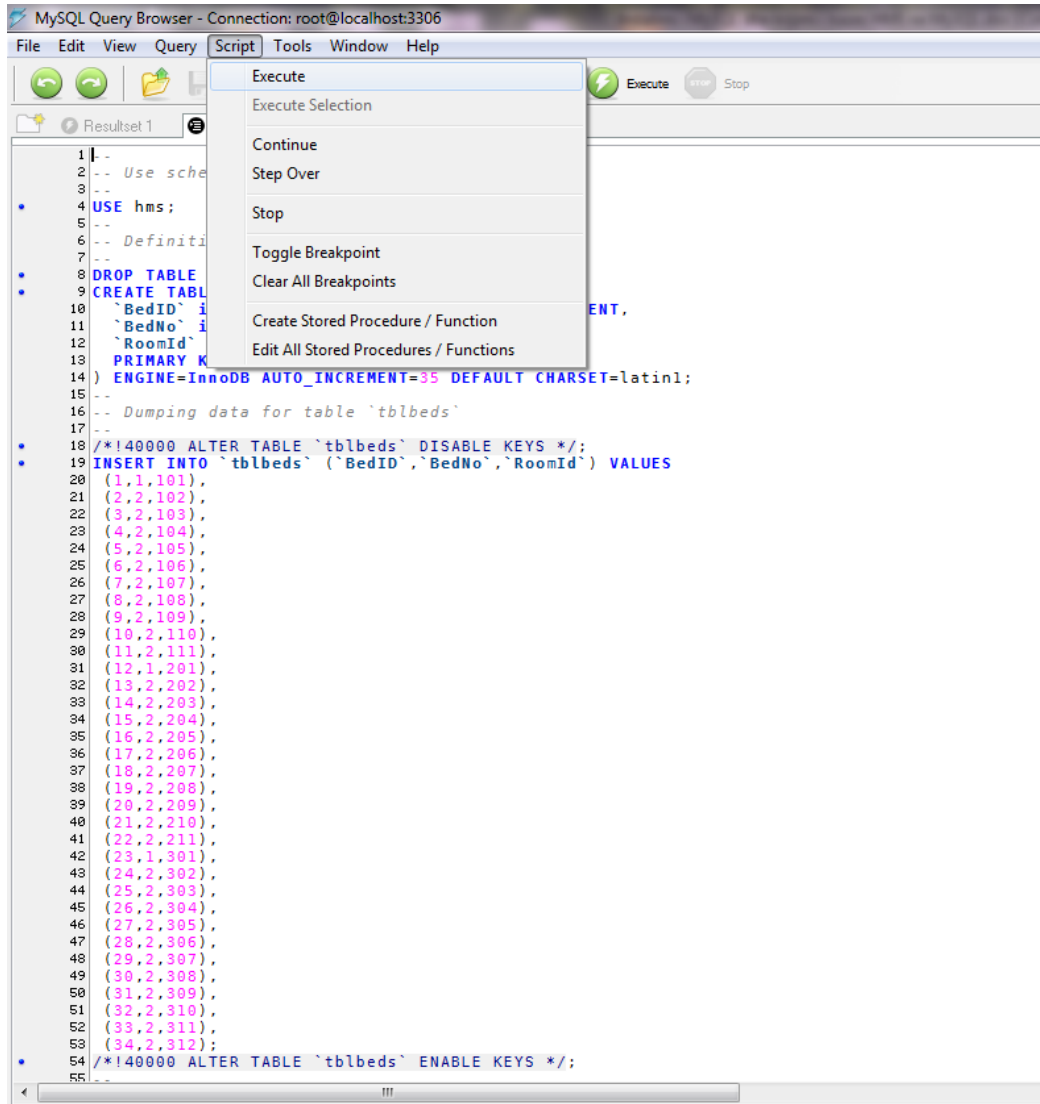
Hapi 31 – Hapja e skriptes



Hapi 32 – Skriptimi



Hapi 33 – Ekzekutimi i skriptes

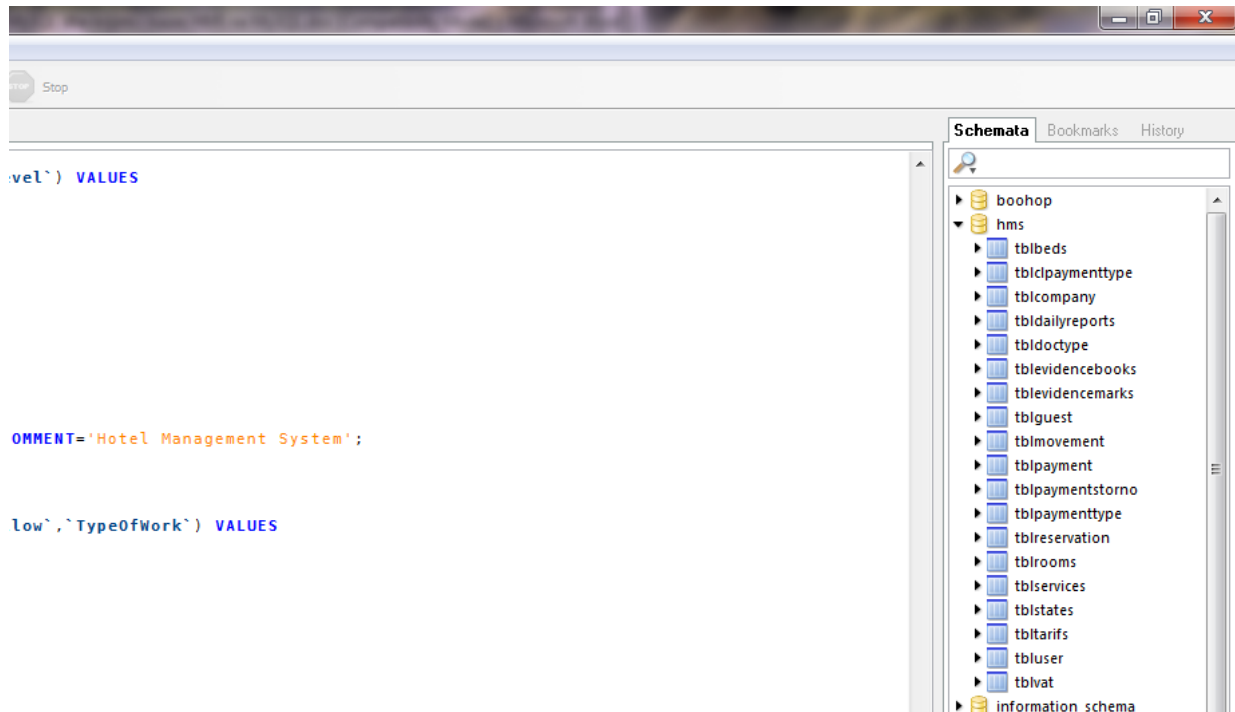


Hapi 34 – Progresi gjate ekzekutimit te skriptes

```

MySQL Query Browser - Connection: root@localhost:3306
File Edit View Query Script Tools Window Help
[Icons: Refresh, Back, Forward, Save, Find, Pause, Continue, Step, Execute, Stop]
Resultset 1 Script 1 x
• 839 /*!40000 ALTER TABLE `tbltarifs` DISABLE KEYS */;
• 840 INSERT INTO `tbltarifs` (`TrId`,`Tarifas`,`Trfs`,`PriceLevel`) VALUES
841 (1,'for one person',1,1),
842 (2,'for two persons',1,2);
• 843 /*!40000 ALTER TABLE `tbltarifs` ENABLE KEYS */;
--
844 -- Definition of table `tbluser`
845 --
• 847 DROP TABLE IF EXISTS `tbluser`;
• 848 CREATE TABLE `tbluser` (
849 `UserId` int(10) unsigned NOT NULL AUTO_INCREMENT,
850 `UserName` varchar(45) NOT NULL,
851 `UserPass` varchar(45) NOT NULL,
852 `Allow` tinyint(1) NOT NULL,
853 `TypeOfWork` tinyint(1) unsigned NOT NULL,
854 PRIMARY KEY (`UserId`)
855 ) ENGINE=InnoDB AUTO_INCREMENT=8 DEFAULT CHARSET=latin1 COMMENT='Hotel Management System';
856 --
857 -- Dumping data for table `tbluser`
858 --
• 859 /*!40000 ALTER TABLE `tbluser` DISABLE KEYS */;
• 860 INSERT INTO `tbluser` (`UserId`,`UserName`,`UserPass`,`Allow`,`TypeOfWork`) VALUES
861 (2,'admin','firms',1,0),
862 (3,'user','zxiw',1,1),
863 (4,'kimete','ojxmq',1,0),
864 (5,'dafina','xzjfsf',1,0),
865 (6,'agron','7>58;<',1,0),
866 (7,'fetahu','flwtskjyfm',1,0);
• 867 /*!40000 ALTER TABLE `tbluser` ENABLE KEYS */;
--
868 -- Definition of table `tblvat`
869 --
• 871 DROP TABLE IF EXISTS `tblvat`;
• 872 CREATE TABLE `tblvat` (
873 `VatId` int(10) unsigned NOT NULL AUTO_INCREMENT,
874 `VatDescription` varchar(45) NOT NULL,
875 `VatAmount` float DEFAULT NULL,
876 PRIMARY KEY (`VatId`)
877 ) ENGINE=InnoDB AUTO_INCREMENT=3 DEFAULT CHARSET=latin1;
878 --
879 -- Dumping data for table `tblvat`
880 --
• 881 /*!40000 ALTER TABLE `tblvat` DISABLE KEYS */;
• 882 INSERT INTO `tblvat` (`VatId`,`VatDescription`,`VatAmount`) VALUES
883 (1,'Pa TVSH',1.16),
884 (2,'Me TVSH',1);
• 885 /*!40000 ALTER TABLE `tblvat` ENABLE KEYS */;
885:46 Progress (57.06%): [Progress Bar]
    
```

Hapi 35 – Rezultati final

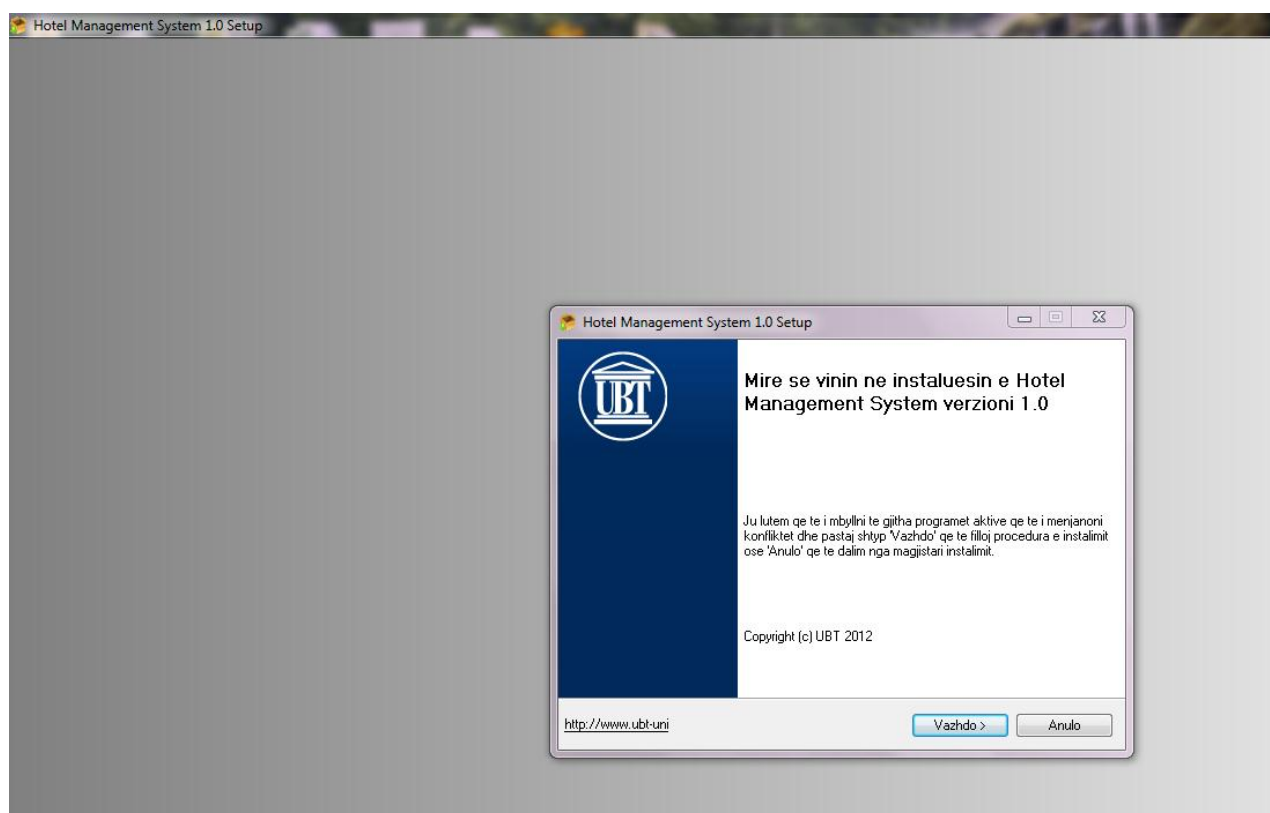
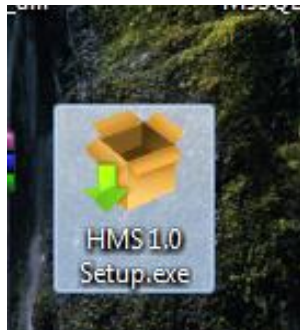


Tabelat

tblbeds
tblclpaymenttype
tblcompany
tbldailyreports
tbldoctype
tblvidencebooks
tblvidencemarks
tblguest
tblmovement
tblpayment
tblpaymentstorno
tblpaymenttype
tblreservation
tblrooms
tblservices
tblstates
tbltarifs
tbluser
tblvat

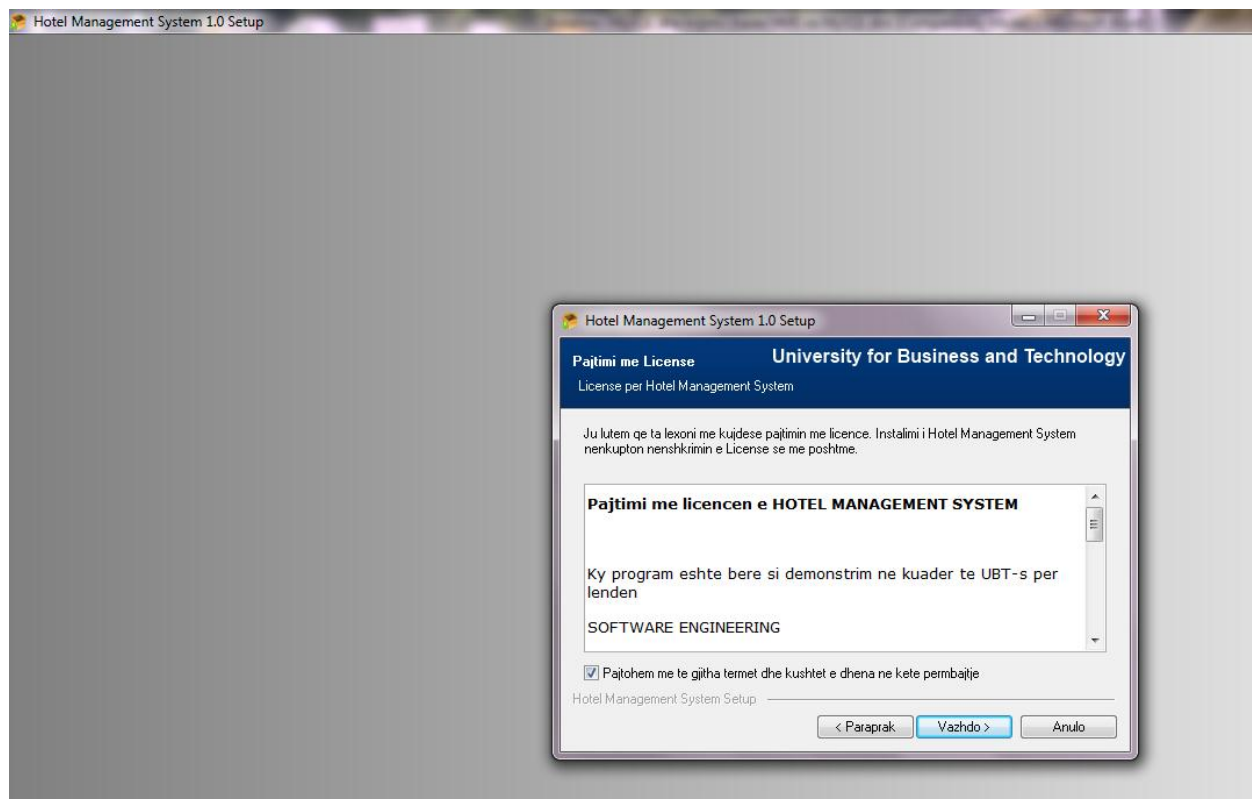
Hapi 36 – Instalimi i Aplikacionit

Klikojm ne **HMS 1.0 Setup.exe**

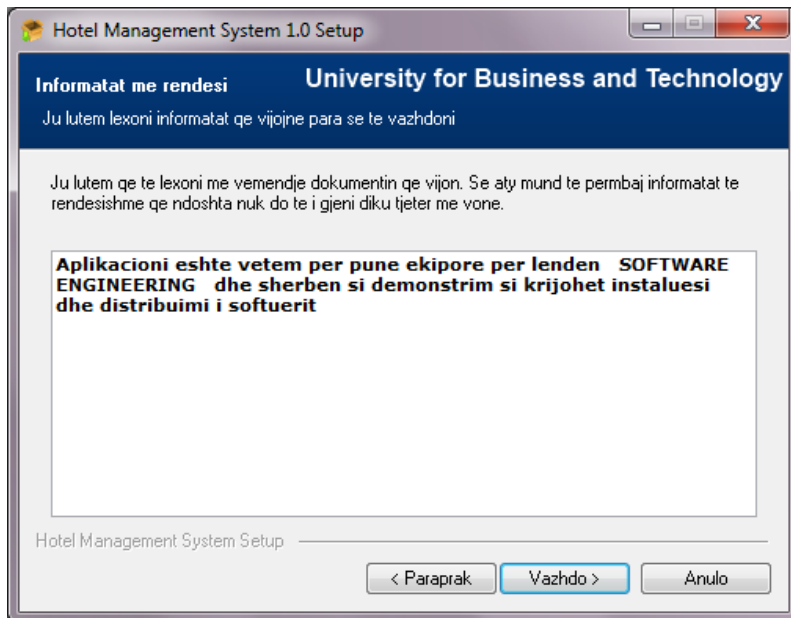


Dhe klikojme ne Vazhdo > “qe te vazhdojme me tej”

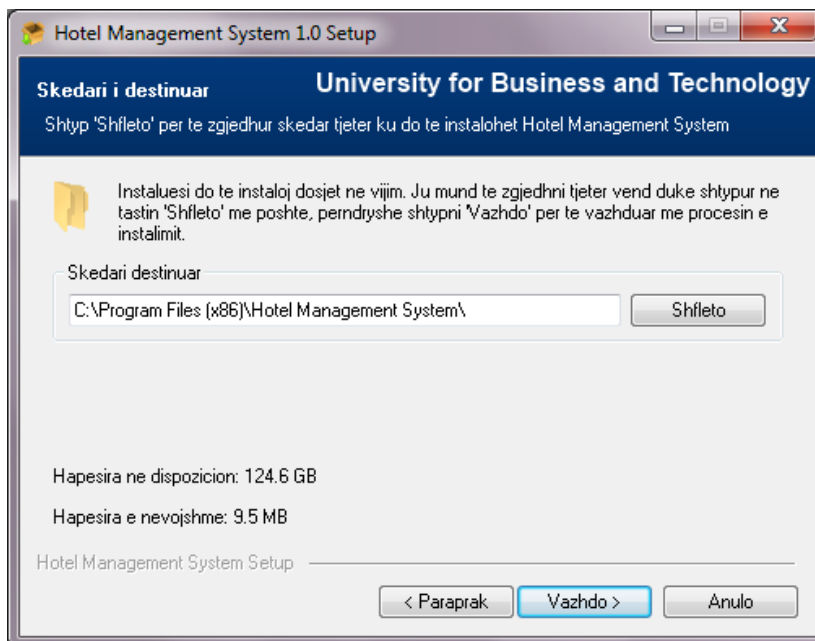
Hapi 37 – Pajtimi me licence e aplikacionit



Hapi 38 – Informata me rendesi gjate instalimit

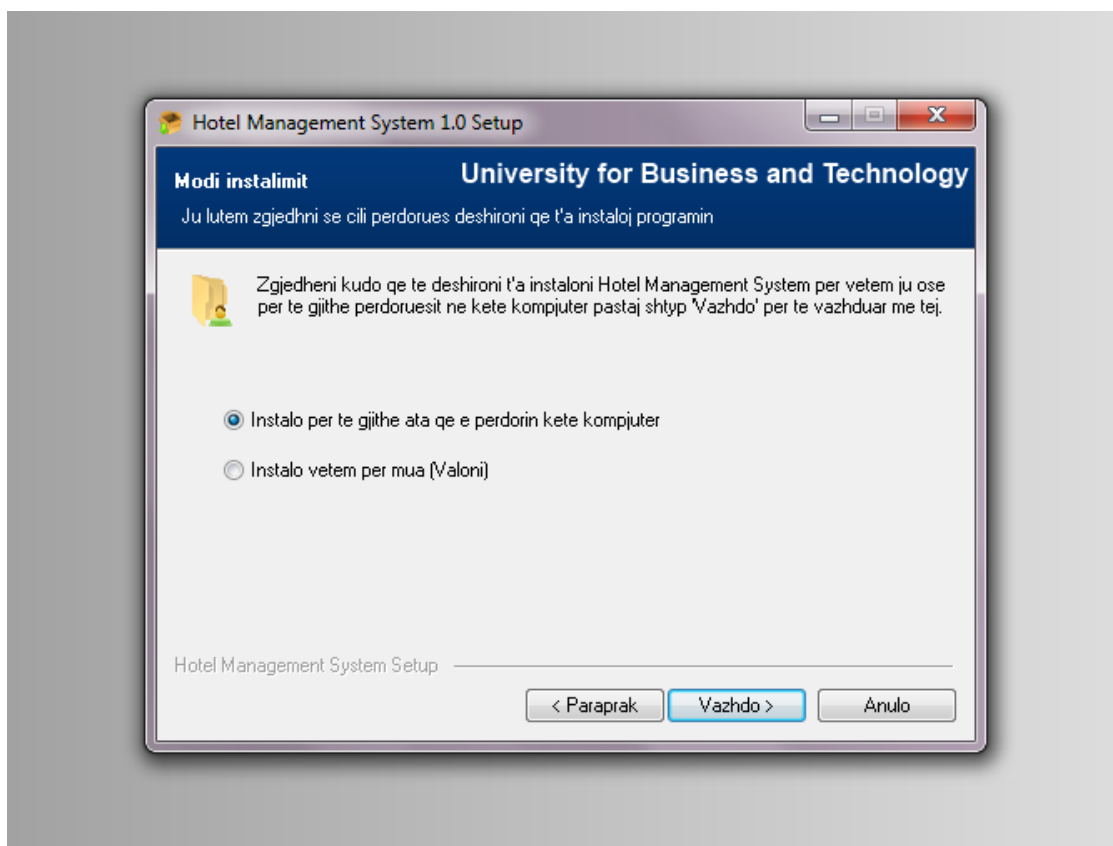


Pastaj klikojme ne butonin Vazhdo >



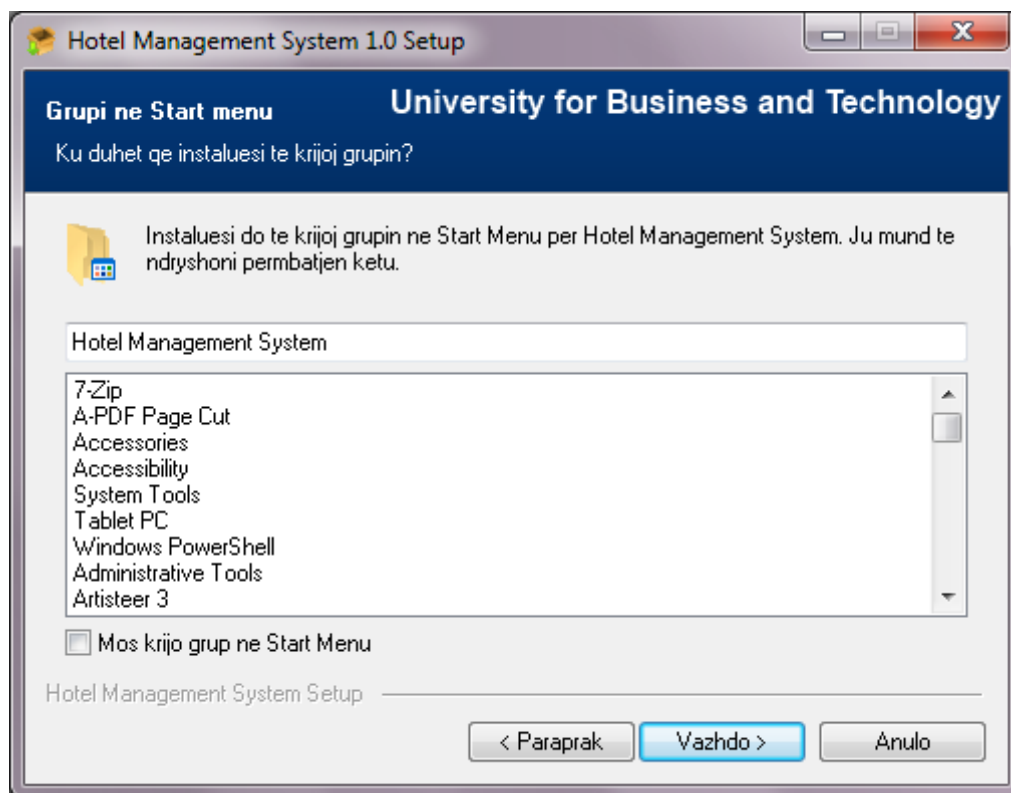
Pastaj klikojme ne butonin Vazhdo >

Hapi 39 – Modi instalimit



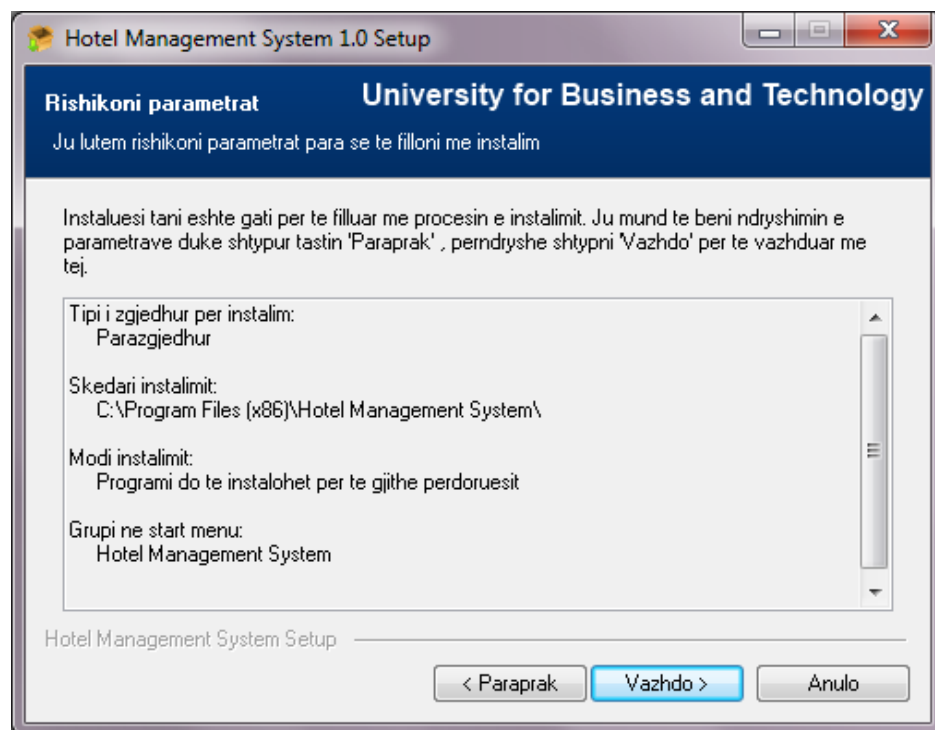
Pastaj klikojme ne butonin Vazhdo >

Hapi 40 – Pathi instalimit



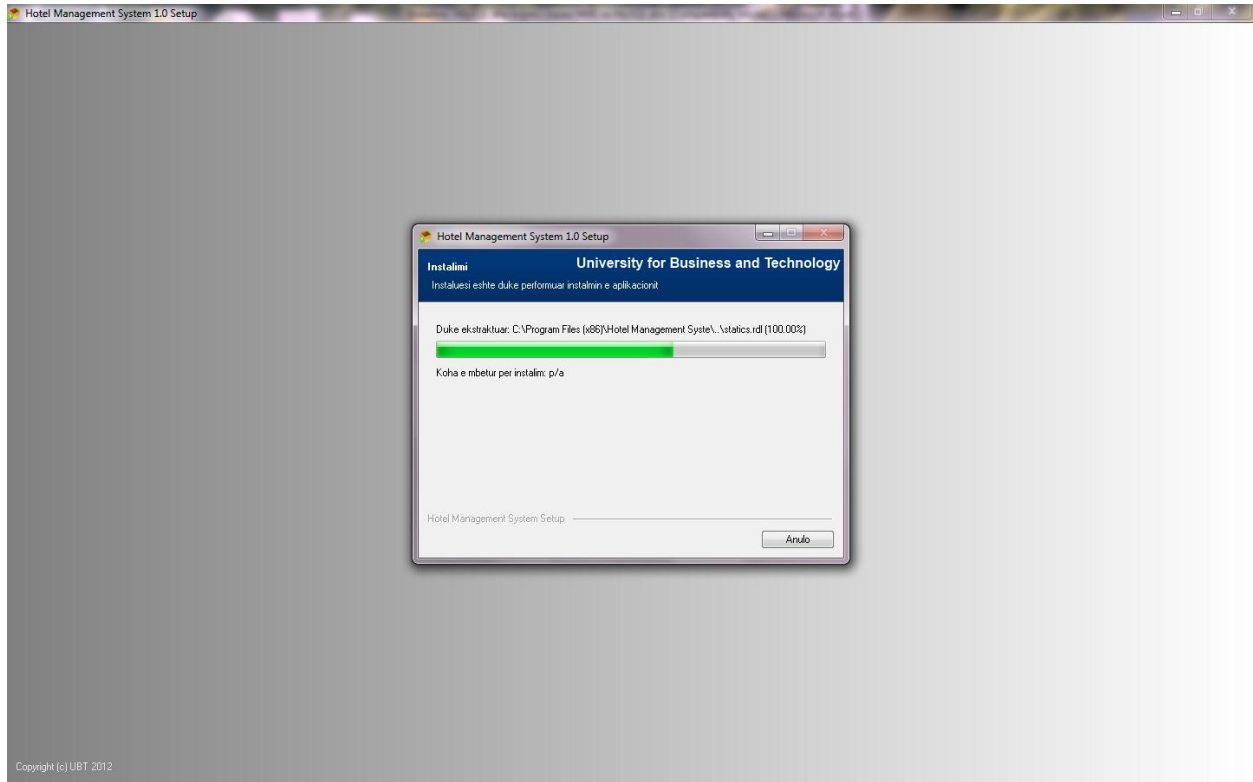
Pastaj klikojme ne butonin Vazhdo >

Rishikimi i parametrave para se te perfundoj instalimit qe te jemi te sigurte qe po e instalojme si duhet

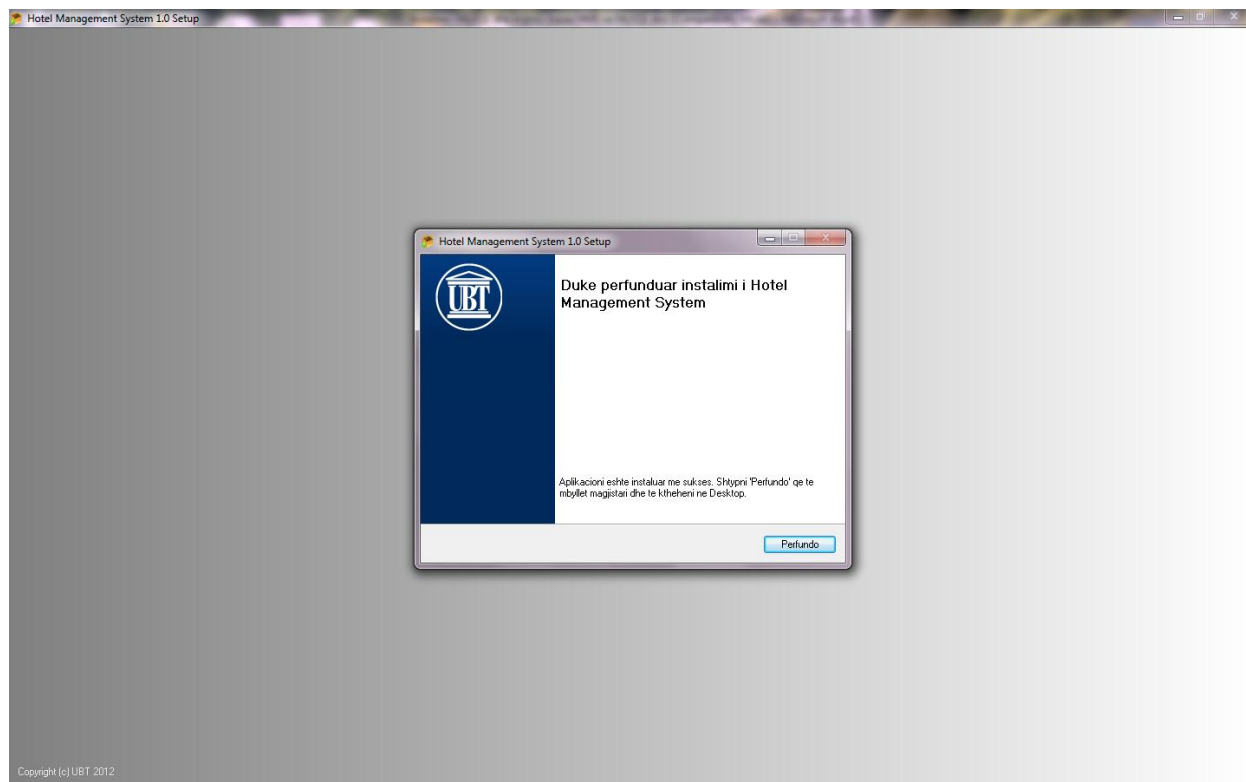


Pastaj klikojme ne butonin Vazhdo >

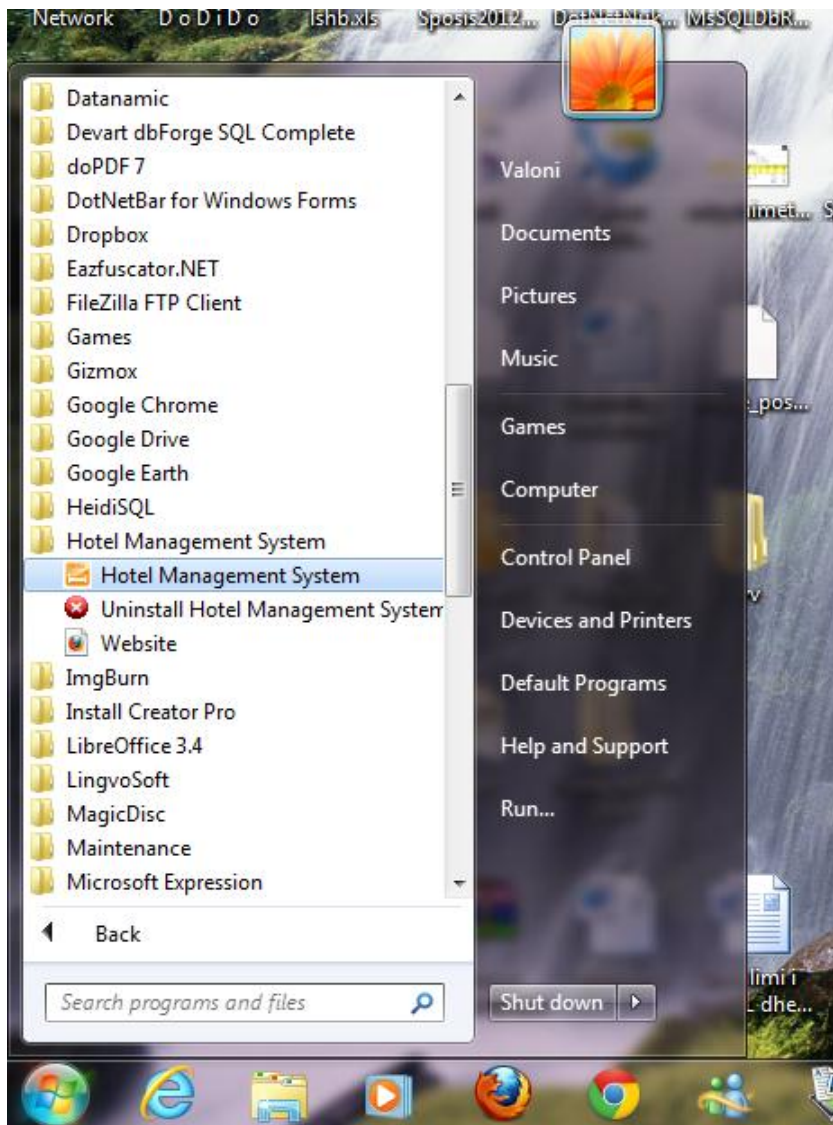
Hapi 41 – Instalimi



Dhe perfundimi

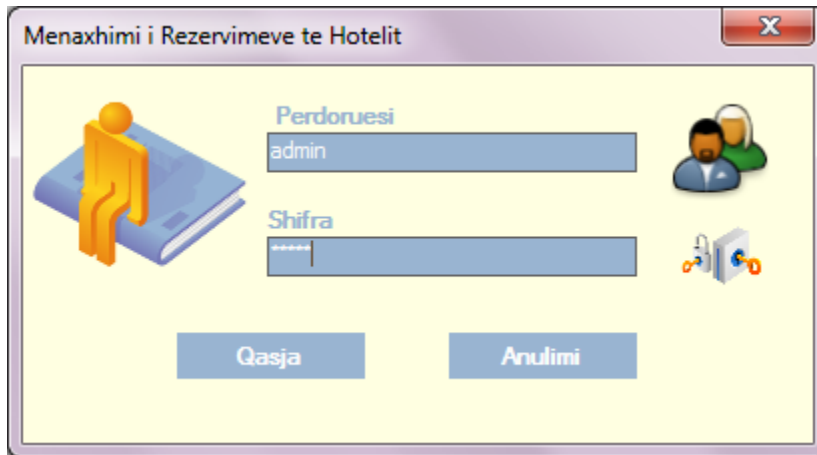


Hapi 42 – Programi i instaluar – startimi



Start -> Program Files -> Hotel Management System

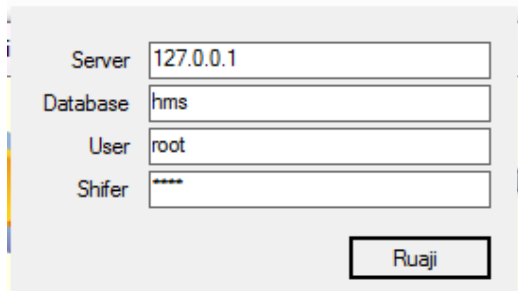
Hapi 43 – Startimi me program



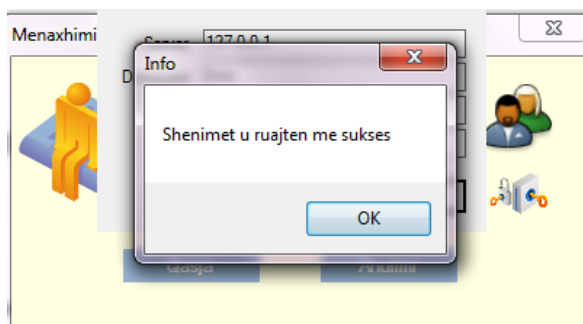
Perdoruesi per pune e ka emrin : admin

Shifra qe e perdor perdoruesi eshte : admin

Nese nuk e gjen do te na **hap dritaren per konfigurim**



Ne rastin tone do te kerkohet “serveri ip-ja se ku gjendet ai server i instaluar” Emri perdoruesit qe programi e perdor per qasje ne baze e te dhenave Shifra e perdoruesit qe programi e perdor per qasje ne baze e te dhenave dhe pasi qe te konfigurojme klikojme ne butonin Ruaji “programi do te mbyllet “

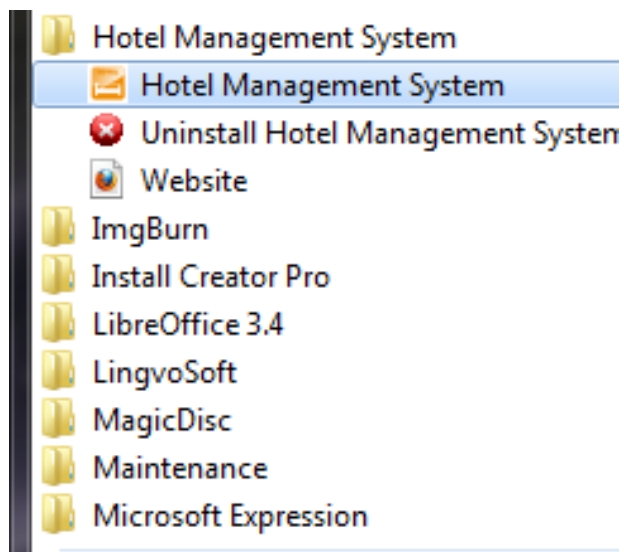


Kliko OK per te ruajtur konfigurimin e fundit

Hapi 44 – Qasja (pas konfigurimit final)

Dhe hapim prap programi nga

Dhe nga Start -> Program Files -> Hotel Management System -> **Hotel Management System**

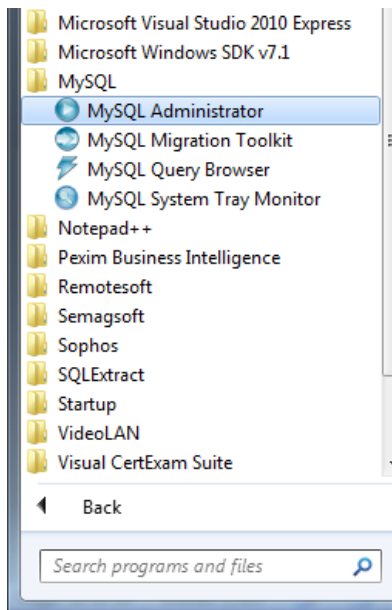


Hapi 45- Hapja e programit per pune (programi gati per pune)

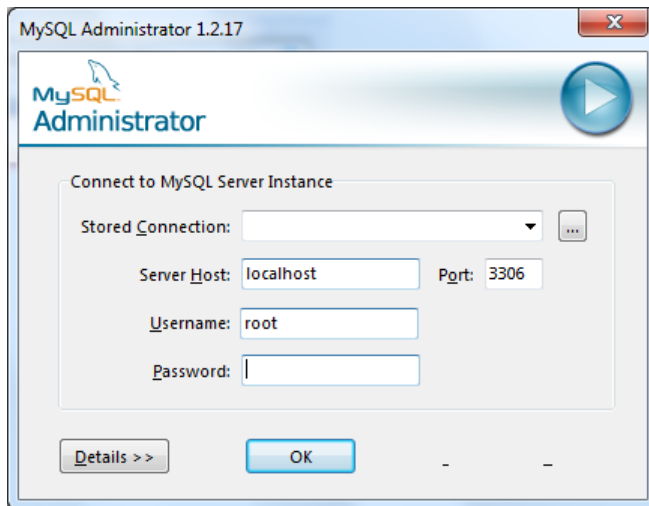
ID	Dhoma	Statusi	Data	Data	Dite	Krevati	Klienti	Ka Gelesin	Ekst
101	Single Room With One Bed	False				2	0	False	001
102	Room With Double Beds	False				2	0	False	002
103	Room With Double Beds	False				2	0	False	003
104	VIP Apartament With Jacuzzi	False				1	0	False	004
105	Room With With Two Separ...	False				2	0	False	005
106	Room With With Two Separ...	False				2	0	False	006
107	Room With With Two Separ...	False				2	0	False	007
108	VIP Room With Hydromassage	False				1	0	False	008
109	Room With Double Beds	False				2	0	False	009
110	Room With Double Beds	False				2	0	False	010
111	Room With Double Beds	False				2	0	False	011
201	Single Room With One Bed	False				2	0	False	012
202	Room With Double Beds	False				2	0	False	013
203	Room With Double Beds	False				2	0	False	014
204	VIP Apartament With Jacuzzi	False				1	0	False	015
205	Room With With Two Separ...	False				2	0	False	016
206	Room With With Two Separ...	False				2	0	False	017
207	Room With With Two Separ...	False				2	0	False	018
208	VIP Room With Hydromassage	False				1	0	False	019
209	Room With Double Beds	False				2	0	False	020
210	Room With Double Beds	False				2	0	False	021
211	Room With Double Beds	False				2	0	False	022
301	Single Room With One Bed	False				2	0	False	023
302	Room With Double Beds	False				2	0	False	024
303	Room With Double Beds	False				2	0	False	025
304	Room With Double Beds	False				2	0	False	026
305	Room With Double Beds	False				2	0	False	027
306	Room With With Two Separ...	False				2	0	False	028
307	Room With With Two Separ...	False				2	0	False	029
308	Room With With Two Separ...	False				2	0	False	030
309	VIP Room With Hydromassage	False				2	0	False	031
310	Room With Double Beds	False				2	0	False	032
311	Room With Double Beds	False				2	0	False	033
312	Room With Double Beds	False				2	0	False	034

Ndersa ne workstation mjafton te perseritet hapat prej 36 deri 45

Hapi 46 – Backup “krijimi I kopjes reserve te baze se te dhenave”

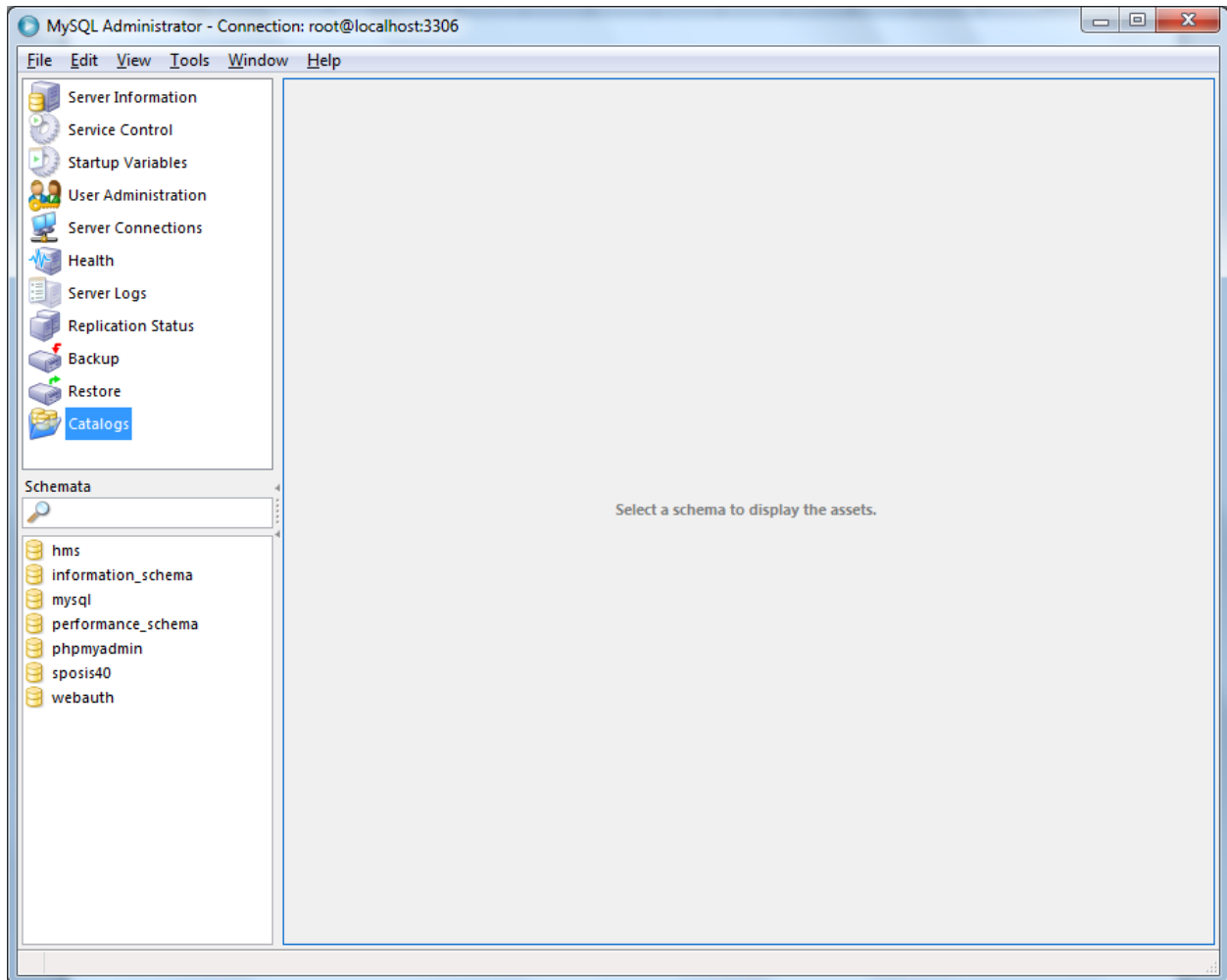


Klikojm ne aplikacionin e administrimit “MySQL Administrator”



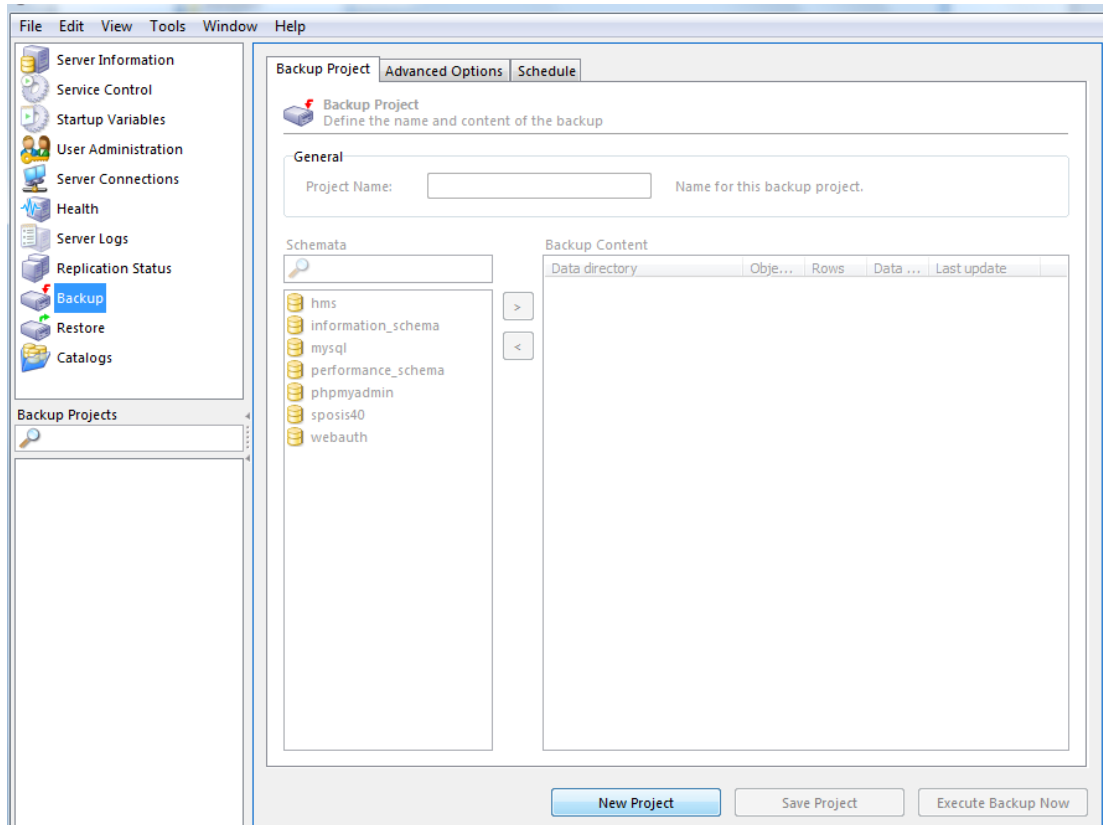
Shenojme user-in dhe shifren te cilen e kemi vendosur gjate instalimit dhe japim ne Server Host : ip adresen se ku gjendet server-i

Katalogjet ne SERVER



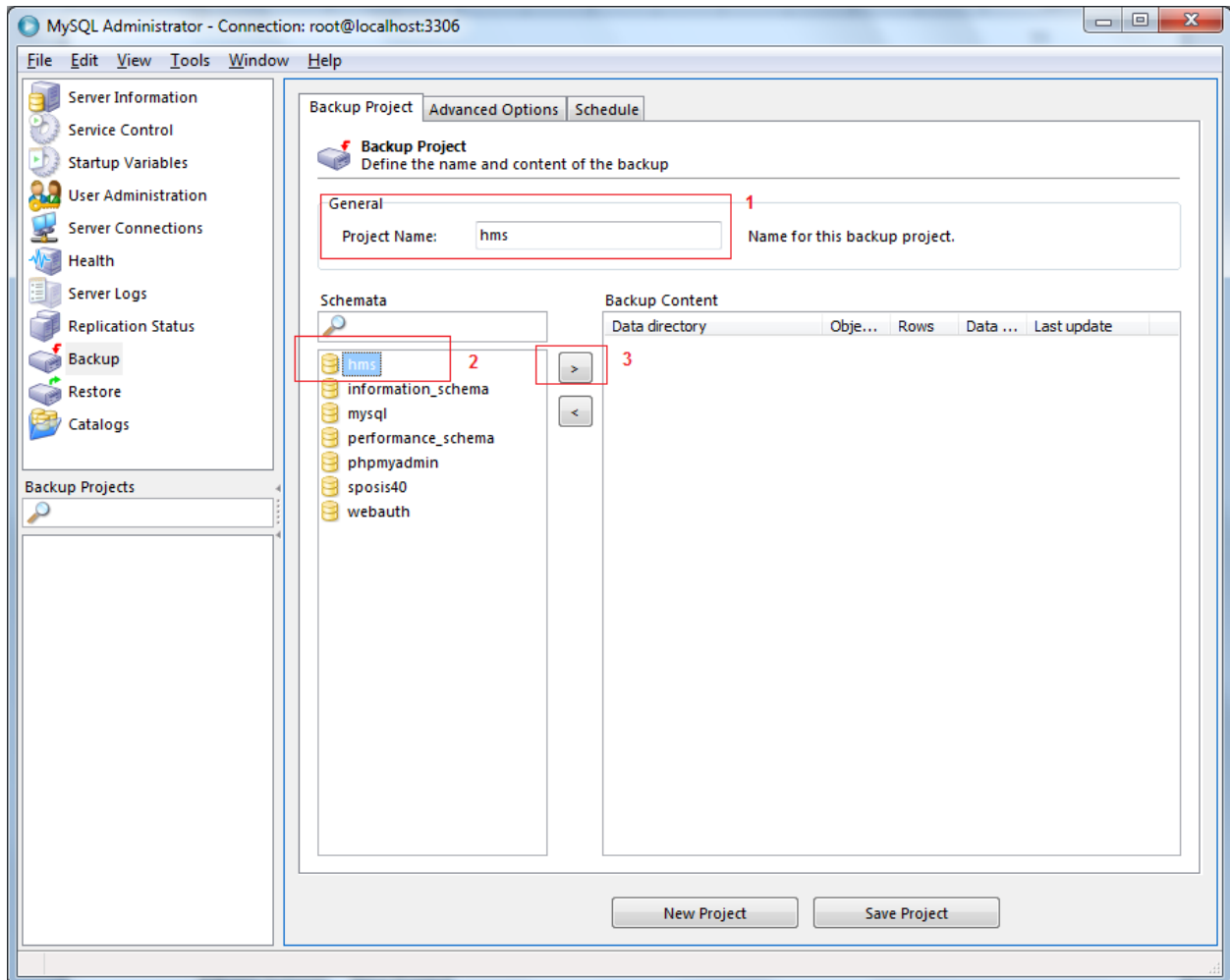
Kur hapet kjo dritare klikojme ne Backup

Backup-i i te dhenave



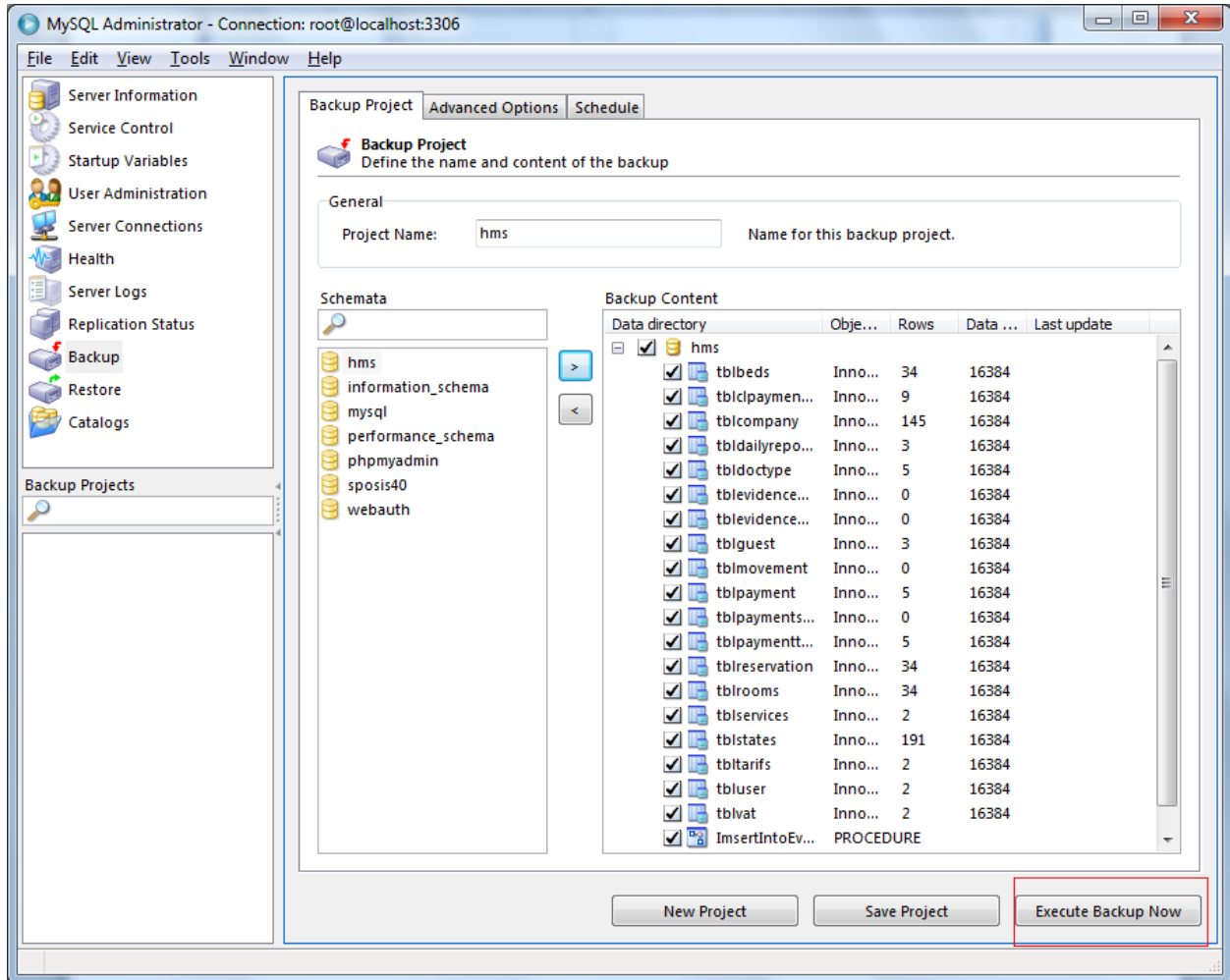
Klikojm butonin New Project

Parameterizimi para krijimit te backup-it



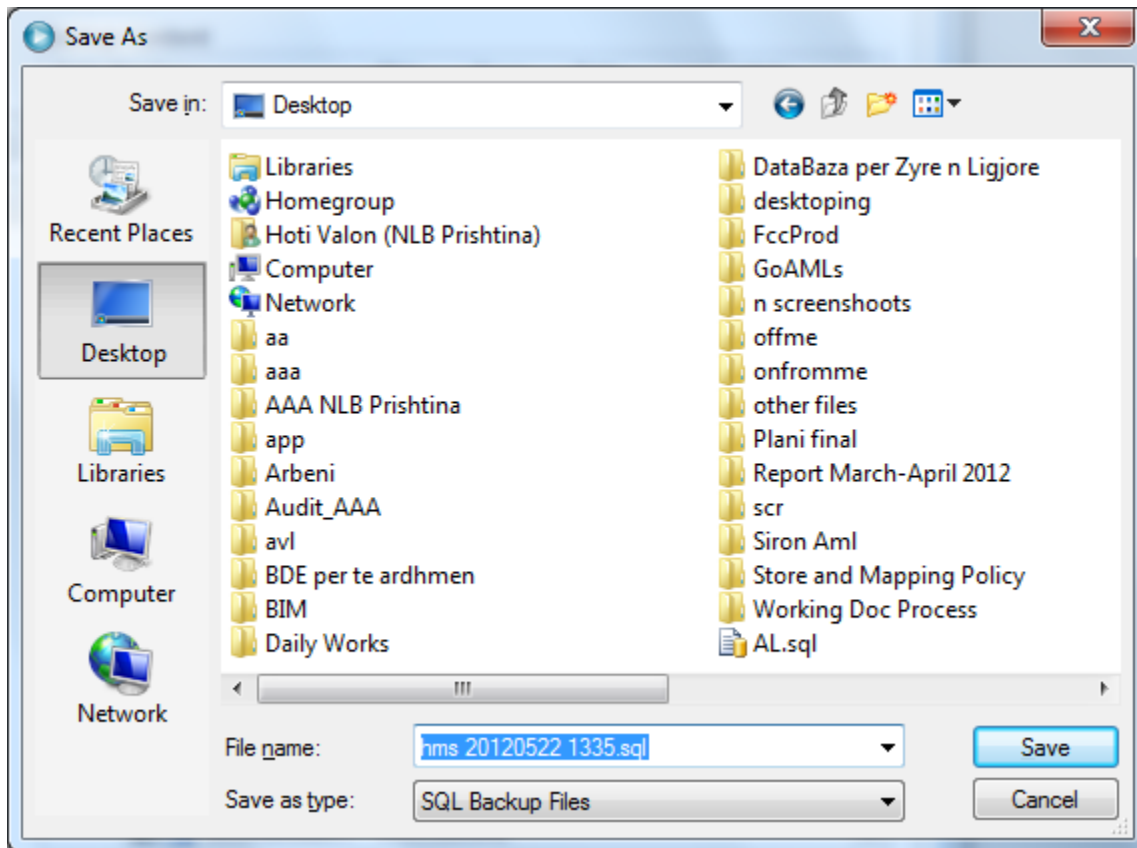
- 1.) Sheno emrin e backup-it
- 2.) Zgjedhe bazen qe deshironi ta beni backup
- 3.) Kliko butonin qe te tregoni se cilat tabela behen backup

Ekzekutimi per krijimin e backup-it



Hapet dritarja per te treguar se ku ruhen te dhenat

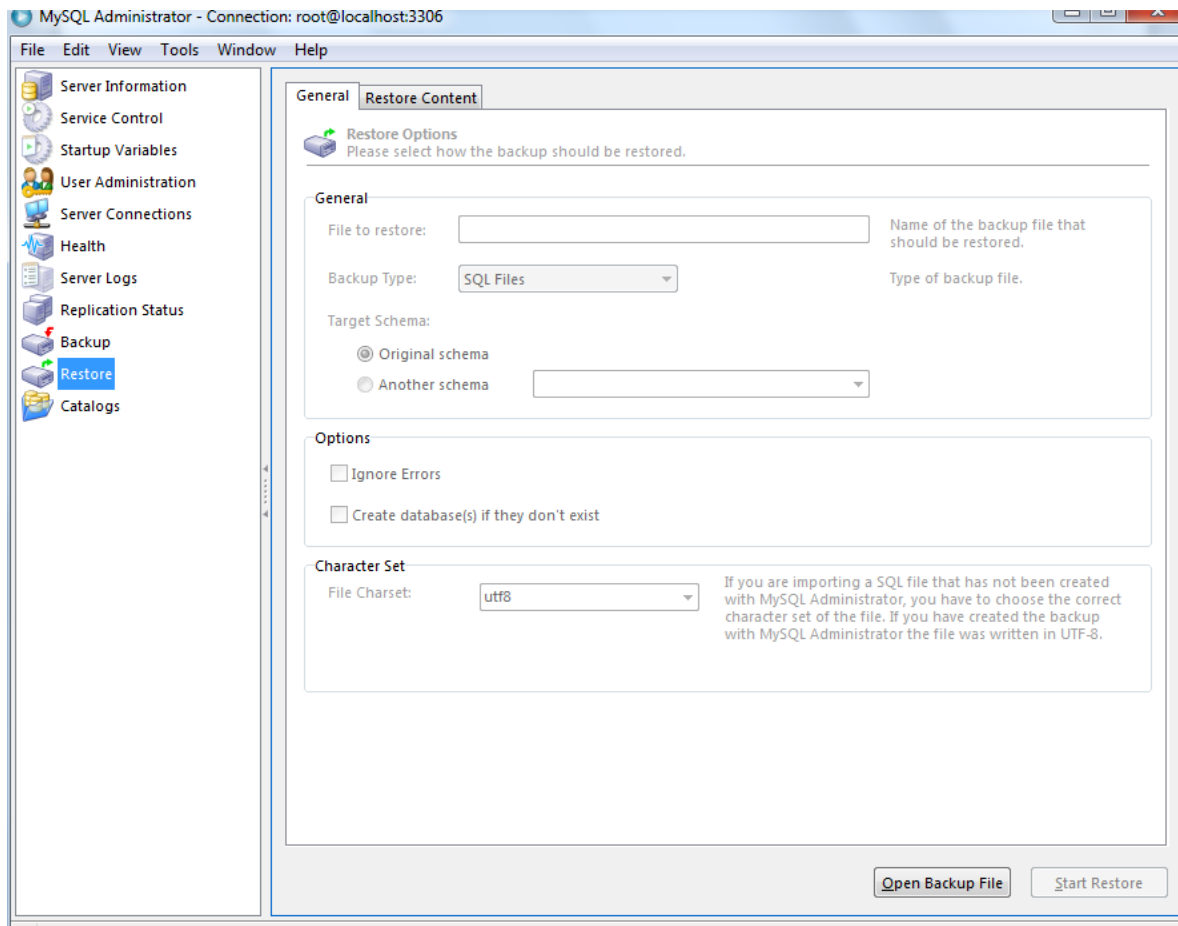
Percaktimi lokacionit per ruajtjen e te dhenave



Pas te ciles klikojm butonin SAVE

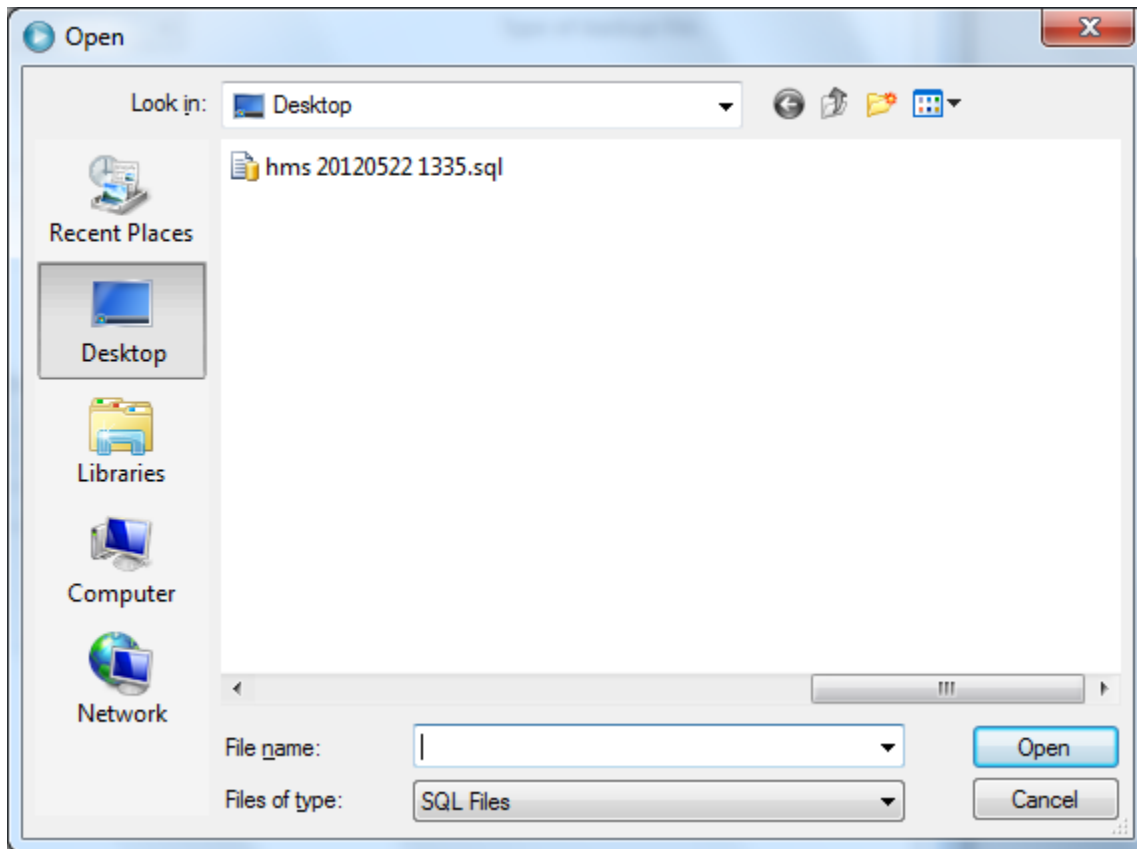
Restore per te bere kthimin e te dhenave (ne rast te prishjes se serverit) deri per daten kur eshte bere backup-i

Verejtje : Backup kthehet vetem deri ne at gjendje siq ka qene shenimet kur jane ruajtur ne backup por jo edhe shenimet e me voneshme.

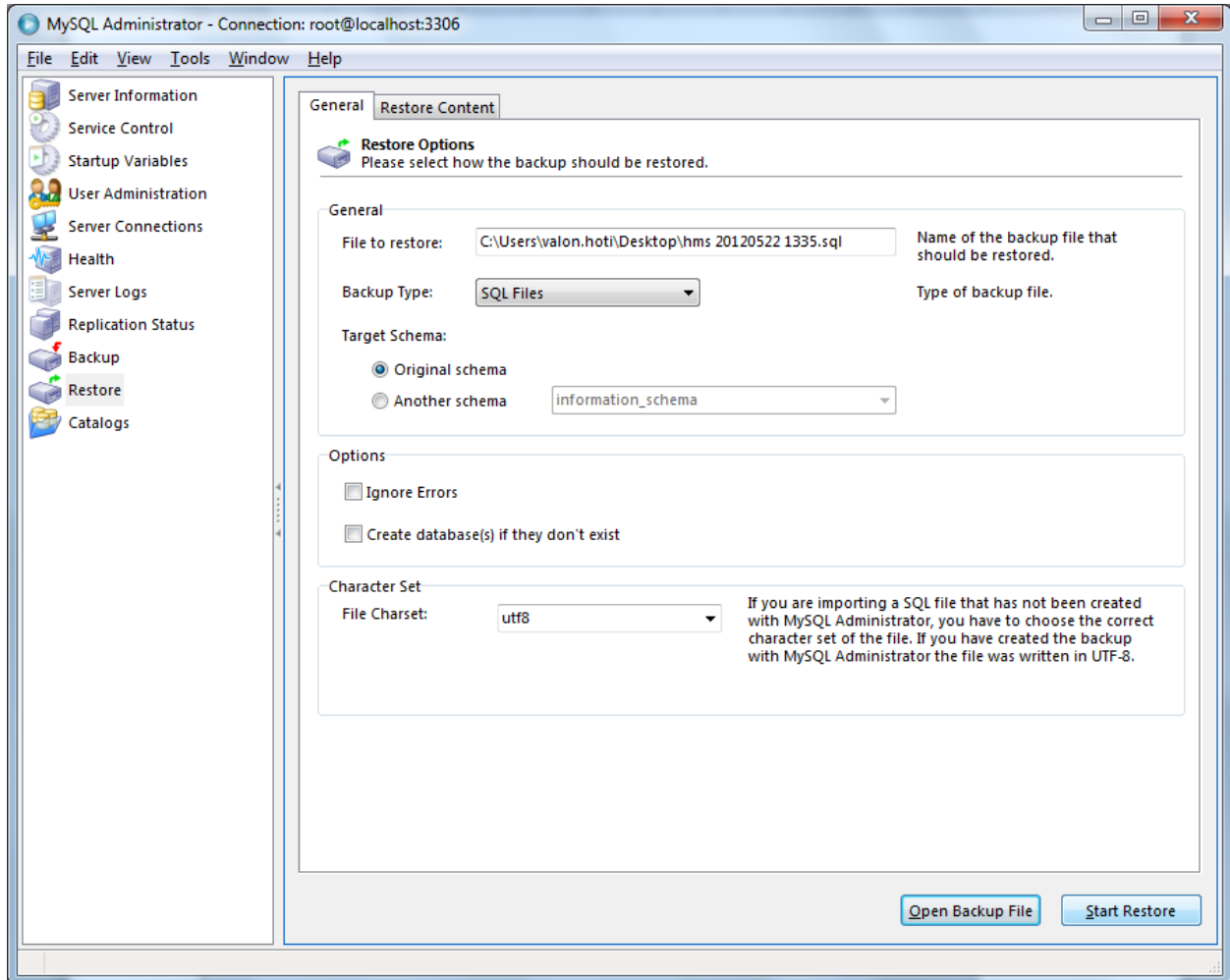


Klikojm ne butonin **Open Backup File**

Zgjedhja e fajllit per restore

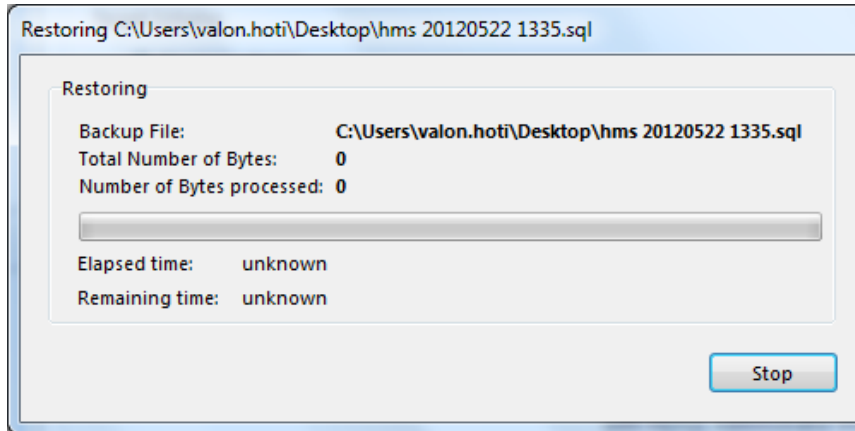


Berja Restore e te dhenave nga Backup-i



Klikojm ne butonin **Start Restore** (pasi qe paraprakishte te kemi zgjedhur fajllin te cilen e bejme restore)

Fillimi i restore-s ne baze e te dhenave



Perfundimi I restore-s me sukses

